

Charles Ritchie

Charles Ritchie

Suites and Pages

February 11 - March 25, 2006

Opening reception

Saturday, February 11, 2006

4:00 - 6:00 P.M.

Gallery hours

Wednesday - Saturday 12 - 5:30 P.M.

and by appointment



Gallery Joe

302 Arch Street
Philadelphia, PA 19106
215.592.7752

mail@galleryjoe.com

www.galleryjoe.com

This project has been made possible in part by support from the Franz and Virginia Bader Fund, the Maryland State Arts Council, and the Arts and Humanities Council of Montgomery County, Maryland.



Gallery Joe

FOR IMMEDIATE RELEASE

January 16, 2006

SUITES AND PAGES – CHARLES RITCHIE AT GALLERY JOE

Philadelphia, PA – Gallery Joe is pleased to present *Suites and Pages*, the first solo show in Philadelphia by Charles Ritchie. The exhibition opens in the Vault Gallery on Saturday, February 11 and continues through March 25, 2006. For this exhibition Ritchie will show 19 drawings from two related bodies of work, *Suites* and *Pages*.

Since 1985 the artist has explored a select group of subjects seen in and around his Silver Spring, Maryland home. All of the works were created in the same room; most looking into the same window and investigating the same subjects serially from very few vantage points. Ritchie refers to this series as *Suites*.

Two suites of self-portrait works are represented in the show; all are night images featuring the artist's visage captured in window reflection to some degree. The earlier group of *Self-Portraits* measures four inches high and is composed about a grid of windowpanes. Works from the more recent suite, *Self Portrait with Night* are a foot broad with window components eliminated allowing a fuller concentration on reflection and the interpenetration of interior and exterior spaces.

The newest series of works is entitled *Pages* and features images combined with inscribed texts. These works are on sheets of paper the size of the artist's journal pages; volumes he has kept continuously since 1977. The images explore Ritchie's creative workspace centering on the table at the window where he paints.

The inscriptions begin as pencil notations, paralleling the work as it develops. These graphite inscriptions are generally obliterated in the image making process as the writing often follows jags of Ritchie's imagination through recording dream fragments and other experiences. The final inked transcription is usually a refinement of dreams originally recorded in the journals.

All of the drawings in the exhibition are constructed over extended periods; months, even years and are limited in their use of color. However, black is virtually always mixed from other colors in order to achieve tonal flux. The primary medium for all works on view is watercolor, however use of graphite and gouache has been increased in more recent works as an experiment in reflectivity, transparency, and opacity.

Ritchie received his graduate degree in painting from Carnegie Mellon University in Pittsburgh. His work is represented in numerous public and private collections, including the Fogg Art Museum, Harvard University Art Museums, Cambridge, MA, The Baltimore Museum of Art, Yale University Art Gallery, New Haven, CT, Georgia Museum of Art, University of Georgia, Athens, and the Philadelphia Museum of Art.

It is with gratitude that Ritchie recognizes the Franz and Virginia Bader Fund, the Maryland State Arts Council, and the Arts and Humanities Council of Montgomery County, Maryland whose support helped make this exhibition possible.

Suites and Pages opens on Saturday, February 11 and runs through Saturday, March 25, 2006. The artist will be present at a reception on Saturday, February 11 from 4 - 6 P.M. Regular gallery hours are Wednesday through Saturday 12 - 5:30, other days by appointment. For additional information contact **Becky Kerlin**, 215.592.7752, FAX 215.238.6923, mail@galleryjoe.com or www.galleryjoe.com

.Over →

302 Arch Street, Philadelphia, PA 19106
Telephone 215.592.7752 Fax 215.238.6923
mail@galleryjoe.com www.galleryjoe.com

Charles Ritchie: Suites and Pages exhibition Gallery Joe 11 February – 25 March 2006

Selections from *Self-Portrait with Night Suite*



1. *Self-Portrait with Night: Two Panels I*, 2005
watercolor, gouache, and graphite on Fabriano paper



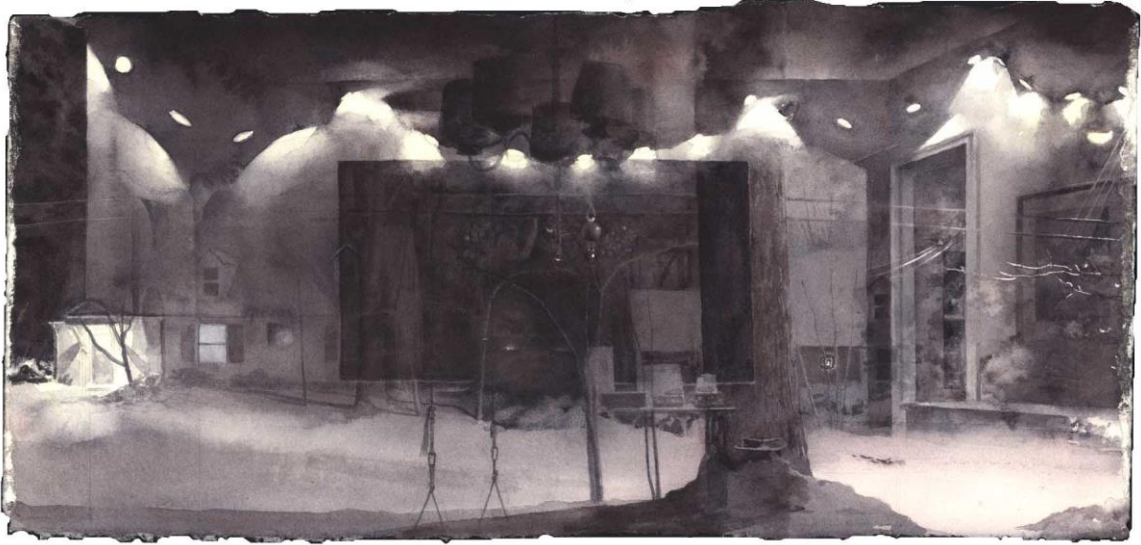
2. *Self-Portrait with Night VIII*, 2005
watercolor, and graphite on Fabriano paper, 5 1/8 x 11 7/8"



3. *Self-Portrait with Night VII*, 2005
watercolor, graphite and gouache on Fabriano paper, 5 1/8 x 11 7/8"



4. *Self-Portrait with Long Night*, 2003-2004
watercolor, pen and ink, and graphite on Fabriano paper, 5 7/8 x 15 3/4"



5. *Self-Portrait with Night IV*, 2003
watercolor, litho crayon, gouache, pen and ink, and graphite on Fabriano paper, 5 1/8 x 11 7/8"



6. *Self-Portrait with Night III*, 2000-2002
watercolor, litho crayon, gouache, pen and ink, and graphite on Fabriano paper, 5 1/8 x 11 7/8"



7. *Self-Portrait with Night II*, 2000-2002
watercolor, litho crayon, gouache, pen and ink, and graphite on Fabriano paper, 5 1/8 x 11 7/8"

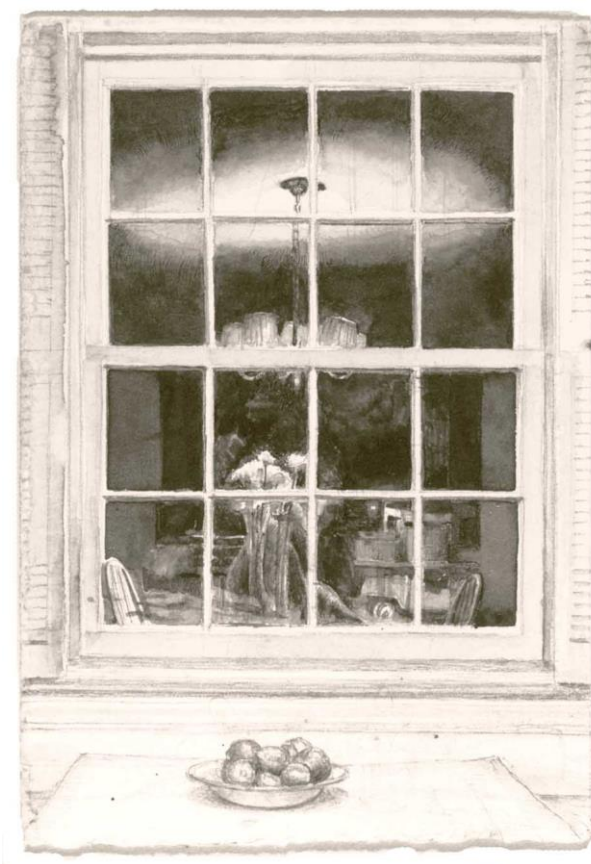


8. *Self-Portrait with Night I*, 2000-2002
watercolor, litho crayon, gouache, pen and ink, and graphite on Fabriano paper, 5 1/8 x 11 7/8"

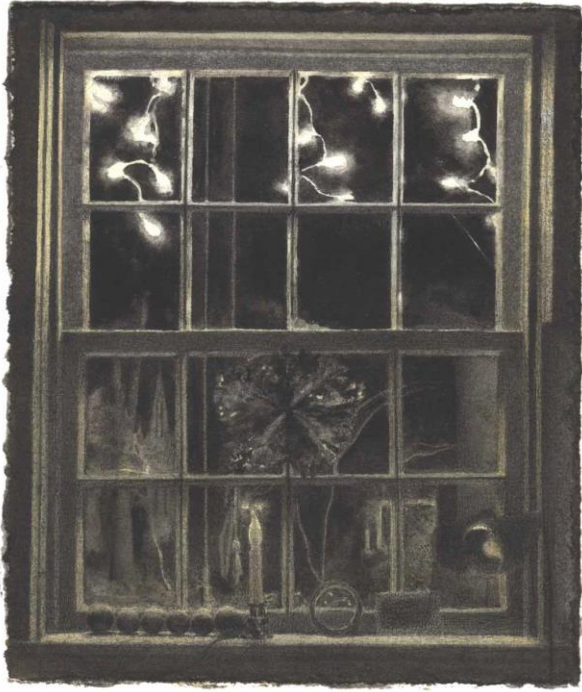


9. *Night in Three Panels*, 2000
watercolor, graphite, conté crayon, and pen and ink on Fabriano paper, 4 1/2 x 19 1/8"

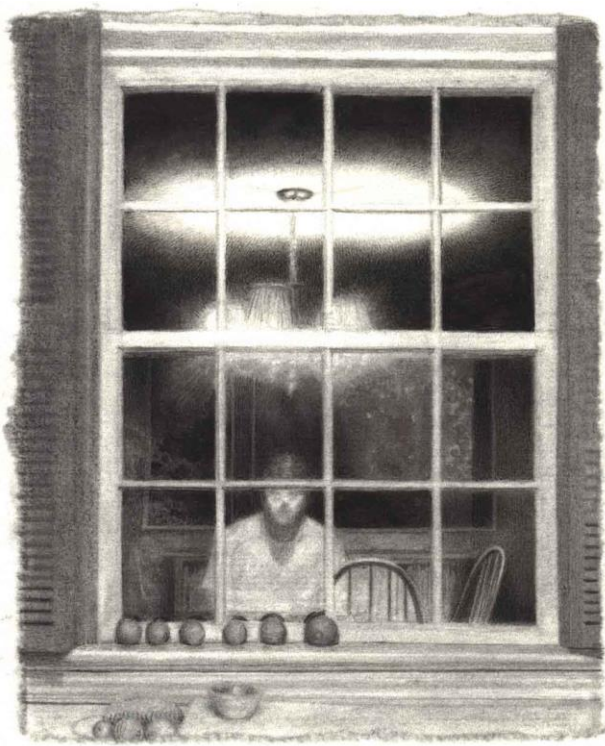
Self-Portraits



10. *Self-Portrait with Paper Whites*, 1994-98
watercolor, graphite, and pen and ink on Fabriano paper, 4 1/4 x 3"

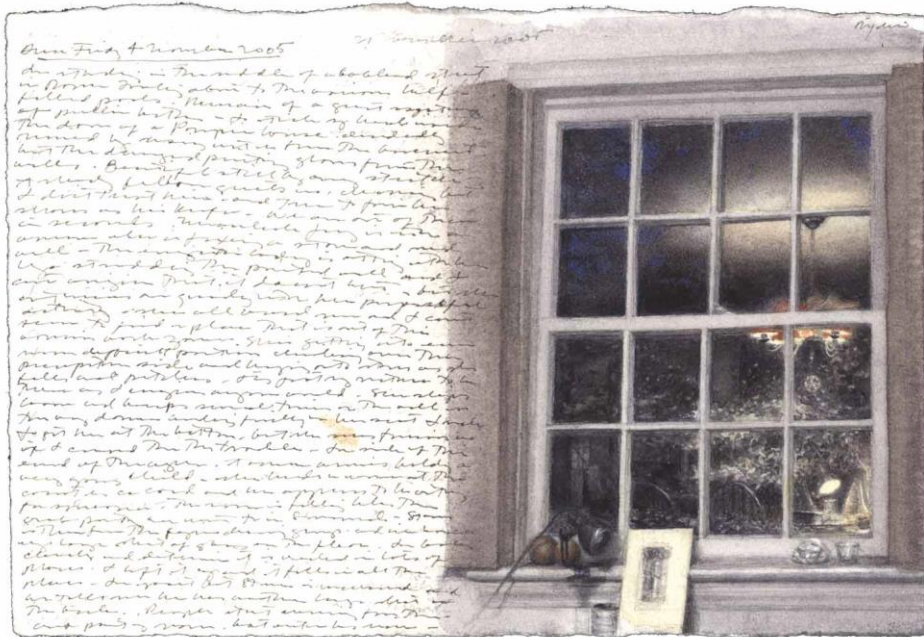


11. *Self-Portrait: Winter*, 2000-2001
watercolor, pen and ink, graphite, and conté crayon on Fabriano paper, 4 1/16 x 3 1/2"

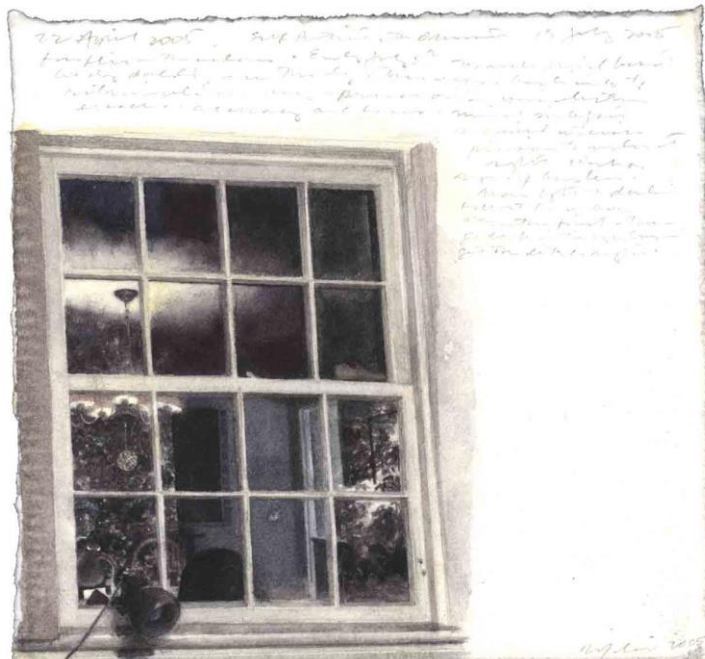


12. *Self-Portrait with Oranges IV*, 1999-2000
watercolor, pen and ink, graphite, and conté crayon on ink jet print on Fabriano paper
4 x 3 1/8"

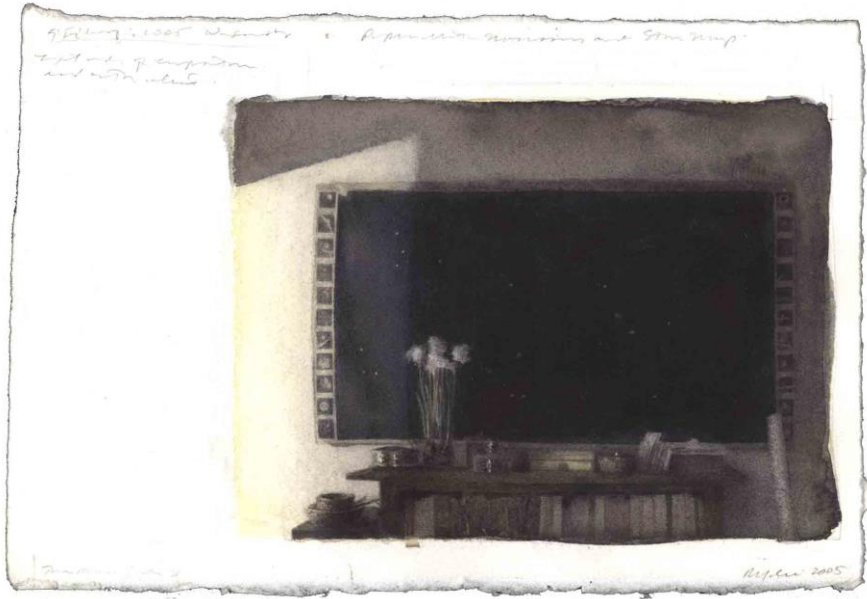
Pages Series:



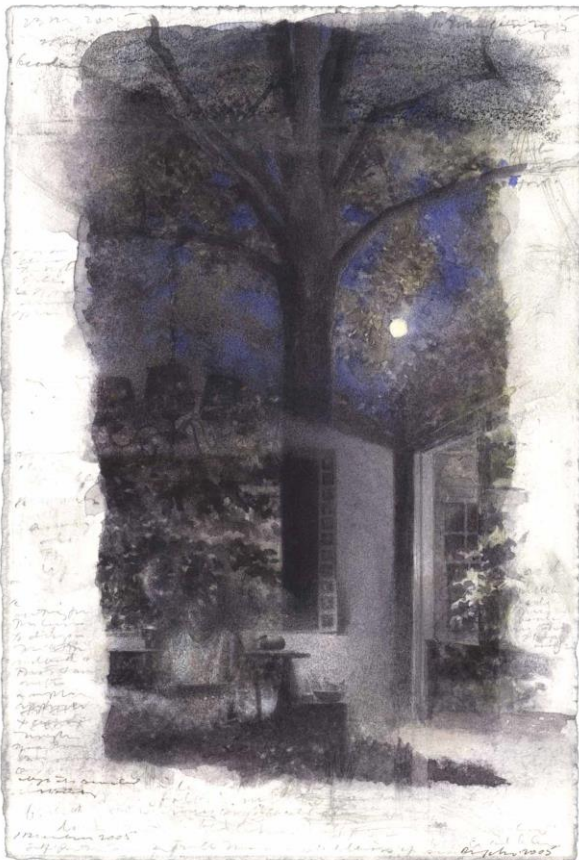
13. *Self-Portrait with Unfinished Drawing*, 2005
watercolor, gouache, and graphite on Fabriano paper, 4 x 6"



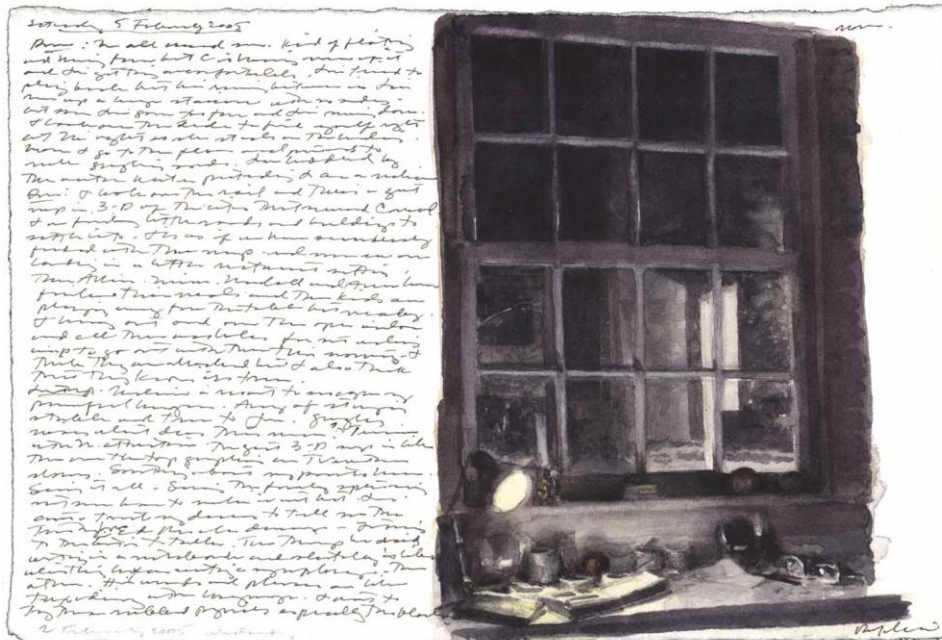
14. *Self-Portrait with Hanging Ornament*, 2005
watercolor, gouache, and graphite on Fabriano paper, 4 x 6"



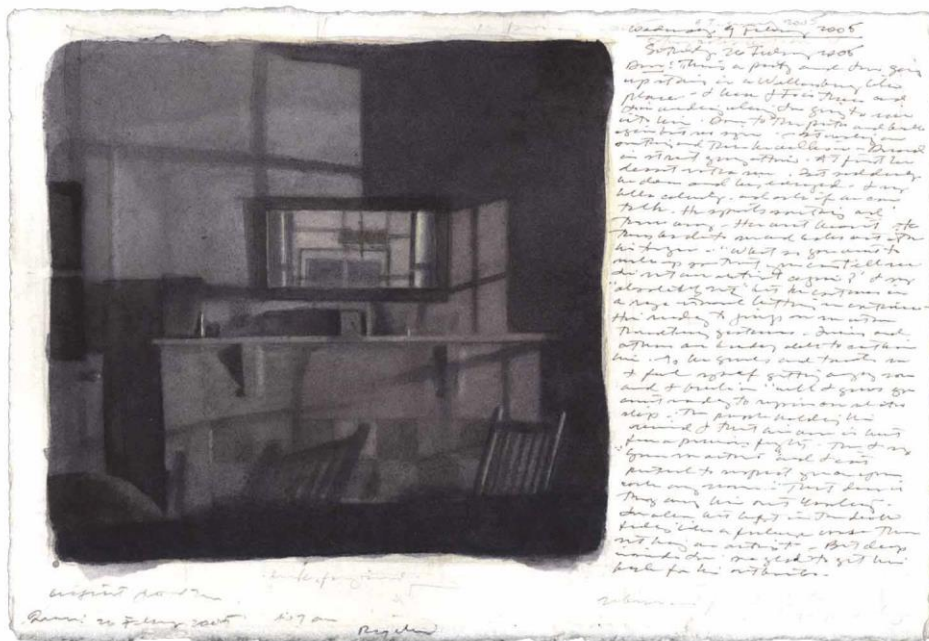
17. Paper Whites and Star Map, 2005
watercolor, gouache, and graphite on Fabriano paper, 4 1/4 x 6 1/8"



18. Self-Portrait with Full Moon, 2005
watercolor, gouache, and graphite on Fabriano paper, 6 x 4"



19. Page: Saturday 5 February 2005, 2005
 watercolor, graphite, and gouache on Fabriano paper, 4 x 6"



20. Page: Saturday 26 February 2005, 2005
 watercolor, graphite, and gouache on Fabriano paper, 4 x 6"

Three-Inch Suite



21. Three-Inch Suite IV: Constellations, 2005
watercolor, gouache, and graphite on Fabriano paper, 4 x 6"



22. Three Inch Suite II: Astronomical Chart, 2004-2005
watercolor and graphite on Fabriano paper, 3 1/8 x 3"



23. Three Inch Suite III: Chandelier, 2004
watercolor, graphite, gouache on Fabriano paper, 3 1/16 x 2 15/16"



24. Three Inch Suite I: Kitchen, 2004
watercolor, graphite, gouache, and colored pencil on Fabriano paper, 3 1/8 x 1 5/8"

Charles Ritchie: Suites and Pages Gallery Joe 11 February – 25 March 2006

Selections from *Self-Portrait with Night Suite*

1. *Self-Portrait with Night: Two Panels I*, 2005
watercolor, gouache, and graphite on Fabriano paper, 5 1/8 x 11 7/8"
2. *Self-Portrait with Night VIII*, 2005
watercolor, and graphite on Fabriano paper, 5 1/8 x 11 7/8"
3. *Self-Portrait with Night VII*, 2005
watercolor, and graphite on Fabriano paper, 5 1/8 x 11 7/8"
4. *Self-Portrait with Long Night*, 2003-2004
watercolor, pen and ink, and graphite on Fabriano paper, 5 7/8 x 15 3/4"
5. *Self-Portrait with Night IV*, 2003
watercolor, litho crayon, gouache, pen and ink, and graphite on Fabriano paper, 5 1/8 x 11 7/8"
6. *Self-Portrait with Night III*, 2000-2002
watercolor, litho crayon, gouache, pen and ink, and graphite on Fabriano paper, 5 1/8 x 11 7/8"
7. *Self-Portrait with Night II*, 2000-2002
watercolor, litho crayon, gouache, pen and ink, and graphite on Fabriano paper, 5 1/8 x 11 7/8"
8. *Self-Portrait with Night I*, 2000-2002
watercolor, litho crayon, gouache, pen and ink, and graphite on Fabriano paper, 5 1/8 x 11 7/8"
9. *Night in Three Panels*, 2000
watercolor, graphite, conté crayon, and pen and ink on Fabriano paper, 4 1/2 x 19 1/8"

Self-Portraits

10. *Self-Portrait with Paper Whites*, 1994-98
watercolor, graphite, and pen and ink on Fabriano paper, 4 1/4 x 3"
11. *Self-Portrait: Winter*, 2000-2001
watercolor, pen and ink, graphite, and conté crayon on Fabriano paper, 4 1/16 x 3 1/2"
12. *Self-Portrait with Oranges IV*, 1999-2000
watercolor, pen and ink, graphite, and conté crayon on ink jet print on Fabriano paper,
4 x 3 1/8"

Pages Series:

13. *Self-Portrait with Unfinished Drawing*, 2005
watercolor, gouache, and graphite on Fabriano paper, 4 x 6"
14. *Self-Portrait with Hanging Ornament*, 2005
watercolor, gouache, and graphite on Fabriano paper, "4 x 6"

15. *Mantel with Square Clock*, 2005
watercolor, gouache, and graphite on Fabriano paper, 4 x 6"

16. *Astronomical Chart, Fan, and Bowl*, 2005
watercolor, gouache, and graphite on Fabriano paper, 4 x 6"

17. *Paper Whites and Star Map*, 2005
watercolor, gouache, and graphite on Fabriano paper, 4 1/4 x 6 1/8"

18. *Self-Portrait with Full Moon*, 2005
watercolor, gouache, and graphite on Fabriano paper, 6 x 4"

19. *Page: Saturday 5 February 2005*, 2005
watercolor, graphite, and gouache on Fabriano paper, 6 x 4"

20. *Page: Saturday 26 February 2005*, 2005
watercolor, graphite, and gouache on Fabriano paper, 4 x 6

Three-Inch Suite

21. *Three-Inch Suite IV: Constellations*, 2005
watercolor, gouache, and graphite on Fabriano paper, 4 x 6"

22. *Three Inch Suite II: Astronomical Chart*, 2004-2005
watercolor and graphite on Fabriano paper, 3 1/8 x 3"

23. *Three Inch Suite III: Chandelier*, 2004
watercolor, graphite, gouache on Fabriano paper, 3 1/16 x 2 15/16"

24. *Three Inch Suite I: Kitchen*, 2004
watercolor, graphite, gouache, and colored pencil on Fabriano paper, 3 1/8 x 1 5/8"