

Charles Ritchie: Drawings, Journals and Prints / Houghton College, 4 November 2014 to 13 January 2015  
Drawings and Prints Checklist



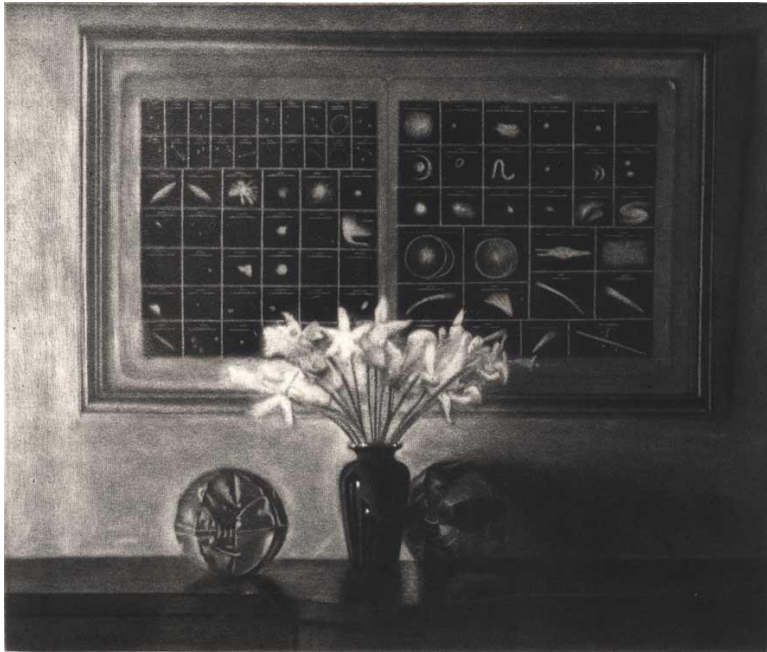
1. *Blue Twilight*, 1996-1997

dark-manner aquatint on heavyweight Rives BFK paper, edition: trial proof  
image: 22 x 30", sheet: 22 x 30", frame: 31 x 38"



2. *Composition with Summer Foliage*, 2010-2011

watercolor and graphite on Fabriano paper  
image: 3 1/8 x 3 3/4", sheet: 3 1/8 x 3 3/4", frame: 14 x 11"



3. *Daffodils with Astronomical Chart*, 1996

mezzotint on Fabriano paper

edition: 23/35, image:  $4 \frac{11}{16} \times 5 \frac{1}{2}$ ", sheet:  $11 \frac{1}{2} \times 12$ ", frame:  $13 \frac{1}{2} \times 16$ "



4. *Draped Chair*, 1997

mezzotint on Rives BFK paper, edition: HC 1

image:  $4 \frac{3}{4} \times 5 \frac{3}{4}$ ", sheet:  $10 \frac{1}{4} \times 11 \frac{3}{4}$ ", frame:  $13 \frac{1}{2} \times 14$ "



5. *Draped Chair*, 1987  
 watercolor, graphite, and pen and ink on Fabriano paper  
 image: 4 1/4 x 5 1/4", sheet: 8 3/4" x 7 1/2", frame: 20 x 16"



6. *First Light*, 2012  
 watercolor and graphite on Fabriano paper  
 image: 5 7/8 x 10 1/2", sheet: 5 7/8 x 10 1/2", frame: 12 x 17"





7. *Graphite Night I*, 2009-2011

graphite and watercolor on Fabriano paper

image: 4 3/4 x 9", sheet: 4 3/4 x 9", frame: 11 x 15"



8. *House VI*, 1999-2000

mezzotint on Rives BFK paper, edition: AP1/5

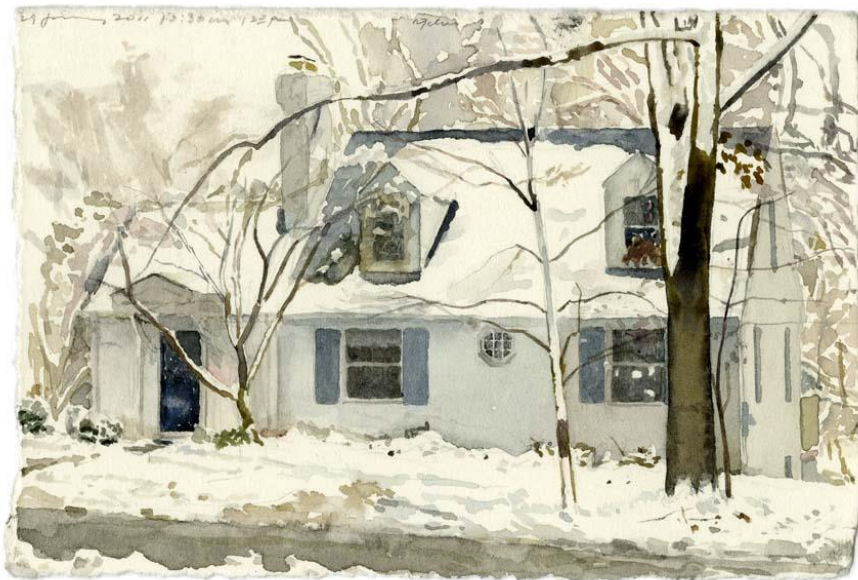
image: 2 3/8 x 2 7/8", sheet: 10 x 9 7/8", frame: 12 1/2 x 12"



9. *House: 1 October 2011, 2011-2012*  
 watercolor, graphite, and pen and ink on Fabriano paper  
 image: 4 1/8 x 6", sheet: 4 1/8 x 6", frame: 11 x 13"



10. *House: 1 October 2012, 2011-2012*  
 watercolor, graphite, and pen and ink on Fabriano paper  
 image: 4 1/8 x 6", sheet: 4 1/8 x 6", frame: 11 x 13"



11. *House*: 29 January 2011, 10:30 am, 2011  
 watercolor and graphite on Fabriano paper  
 image: 4 x 6", sheet: 4 x 6", frame: 11 x 14"



12. *House*: 9 February 2011, 4:35 am, 2011  
 watercolor and graphite on Fabriano paper  
 image: 4 x 6", sheet: 4 x 6", frame: 11 x 14"





13. *Houses in Moonlight*, 2010-2011

watercolor, graphite, and conté crayon on Fabriano paper

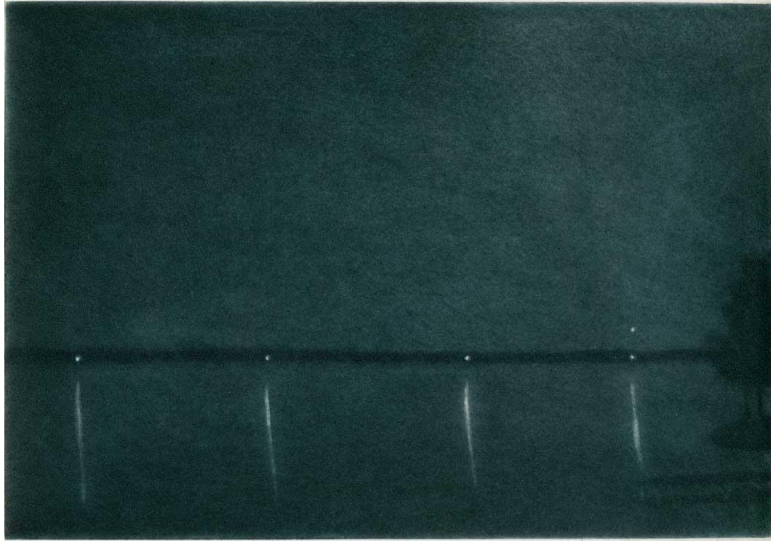
image: 2 3/8 x 6 1/8", sheet: 2 3/8 x 6 1/8", frame: 11 x 14"



14. *Interior/Exterior*, 1989

watercolor, graphite, and pen and ink on Fabriano paper

image: 18 x 37", sheet: 8 1/8" x 29 3/8", frame: 16 x 37 1/2"

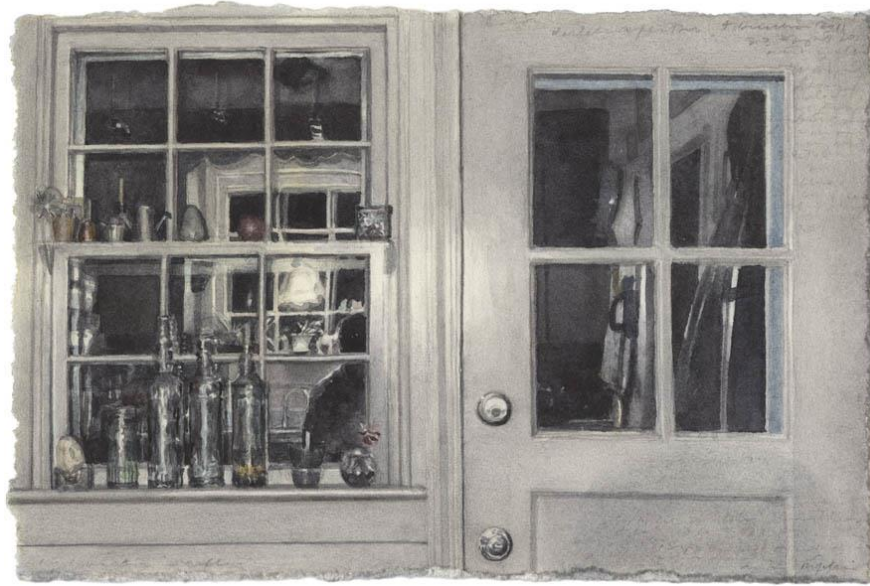


15. *Island 1 (trial proof)*, 1998  
 spitbite aquatint on Rives BFK paper, edition: trial proof  
 image: 5 x 3 1/2", sheet: 13 x 11 1/2", frame: 13 1/4 x 13"



16. *Island 4 (trial proof)*, 1998  
 spitbite aquatint on Rives BFK paper, edition: trial proof  
 image: 4 x 5 5/8", sheet: 11 1/2 x 13", frame: 14 1/2 x 16"





17. *Kitchen Windows with Reflections*, 2011  
watercolor and graphite on Fabriano paper  
image: 4 x 6", sheet: 4 x 6", frame: 11 x 14"



18. *Kitchen with Reflections*, 2008-2009  
watercolor, gouache, graphite, and pen and ink on Fabriano paper  
image: 6 1/4 x 4 1/4", sheet: 6 1/4 x 4 1/4", frame: 14 x 11"



19. *Landscape in Conté Crayon and Graphite*, 2006-2011  
 conté crayon, graphite, and watercolor on Fabriano paper  
 image: 5 3/8 x 11 7/8", sheet: 5 3/8 x 11 7/8", frame: 12 3/8 x 20"



20. *Landscape: Dust and Shade [work in progress]*, 1986-  
 graphite and pen and ink on Fabriano paper  
 image: 9 x 30 1/4", sheet: 9 x 30 1/4", frame: 16 x 37 1/4"





21. *Late Sun*, 1990-96

watercolor, graphite, conte crayon, litho crayon, and pen and ink on Fabriano paper

image: 5 1/4 x 9 7/8", sheet: 5 1/4 x 9 7/8", frame: 11 1/2 x 16 1/2"



22. *Midday Rain*, 1994-2007

watercolor and graphite on Fabriano paper

image: 4 7/8 x 9 3/4", sheet: 4 7/8 x 9 3/4", frame: 11 1/2 x 16 1/2"

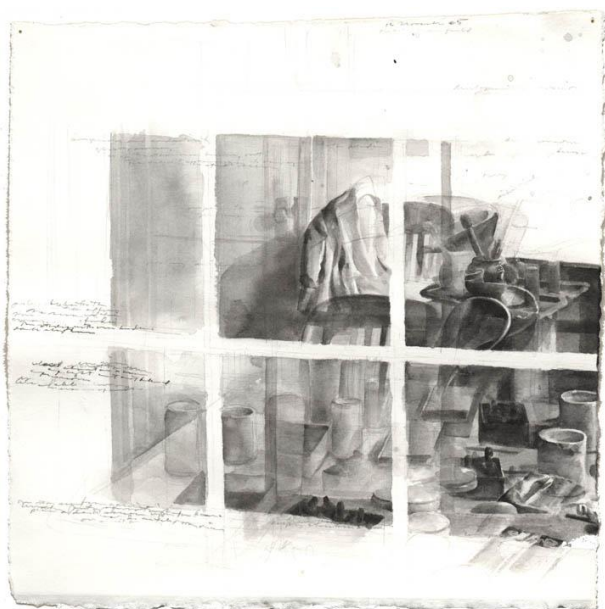




23. *Paperwhites and Pitcher*, 1984

watercolor, graphite, and pen and ink on Fabriano paper

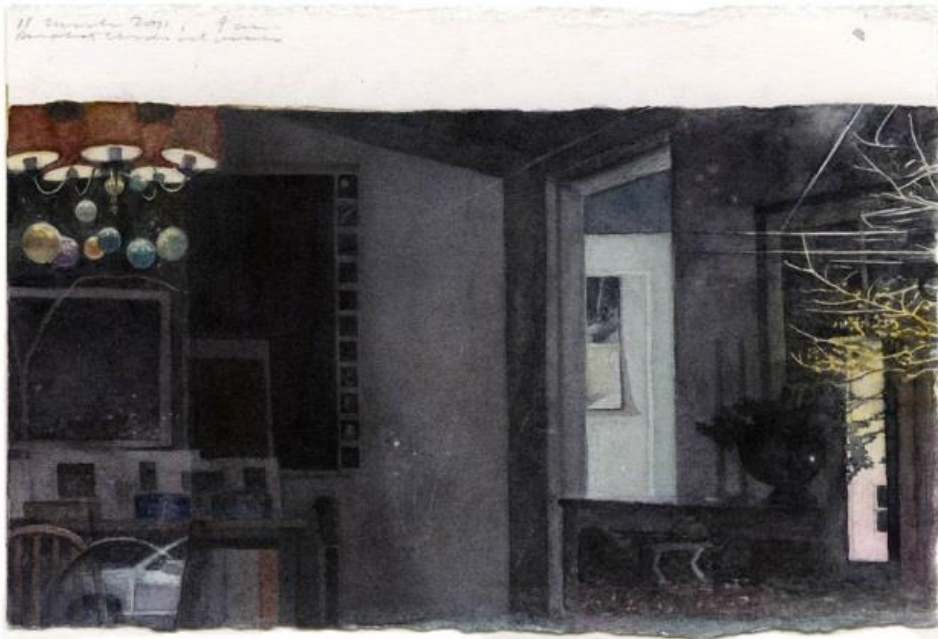
image: 10 1/4 x 4 1/2" two panels, sheet: 10 1/4 x 4 1/2" two panels, frame: 15 1/2 x 10"



24. *Reflected Worktable*: 12 November 1985, 1985

watercolor, graphite, and pen and ink on Fabriano paper

image: 7 9/16 x 7 1/2", sheet: 7 9/16 x 7 1/2", frame: 16 x 13 1/2"



25. *Reflection*: 11 March 2011, 4 am, 2011  
watercolor and graphite on Fabriano paper  
image: 4 x 6", sheet: 4 x 6", frame: 11 x 14"



26. *Rocking Chair*, 1983  
watercolor, graphite, and pen and ink on Fabriano paper  
image: 4 3/8 x 2 3/8", sheet: 4 3/8 x 2 3/8", frame: 13 1/2 x 12"



27. *Rocking Chair*, 1995  
 mezzotint on Rives BFK paper, edition: AP 1/5  
 image: 5 13/16 x 4 3/4", sheet: 11 1/2 x 10", frame: 14 x 13"



28. *Rocking Chair in Sunlight*, 1988-89  
 watercolor, graphite, and pen and ink on Fabriano paper  
 image: 6 7/8 x 5 3/8", sheet: 9 1/8 x 8 1/4", frame: 20 x 16"





29. *Self-Portrait with Night: Pieced Panels I*, 2006-2009

watercolor, gouache, graphite, and pen and ink on Fabriano paper

image: 5 5/8 x 14 1/4" three irregular panels, sheet: 5 5/8 x 14 1/4", frame: 11 1/2 x 21"



30. *Self-Portrait with Night XI*, 2011-2012

watercolor and graphite on Fabriano paper

image: 5 1/2 x 12 1/4", sheet: 5 1/2 x 12 1/4", frame: 11 x 17 1/2"



31. *Self-Portrait with Studio Table*, 2006  
 watercolor and graphite on Fabriano paper  
 image: 6 1/4 x 4 7/8", sheet: 6 1/4 x 4 7/8", frame: 13 x 15"



32. *Snow in Two Panels*, 2008-2011  
 watercolor, conte crayon, and graphite on Fabriano paper  
 image: 4 x 12", sheet: 4 x 12", frame: 11 x 19"



33. *Streetlight: 11-30 November 2011, 2011*  
 watercolor and graphite on Fabriano paper  
 image: 12 x 5 1/2", sheet: 12 x 5 1/2", frame: 15 x 9"



34. *Study for Interior/Exterior: February - March 1987, 1987*  
 watercolor, graphite, and pen and ink on Fabriano paper  
 image: 5 x 10 1/2", sheet: 9 1/2" x 13 7/8", frame: 16 x 20"

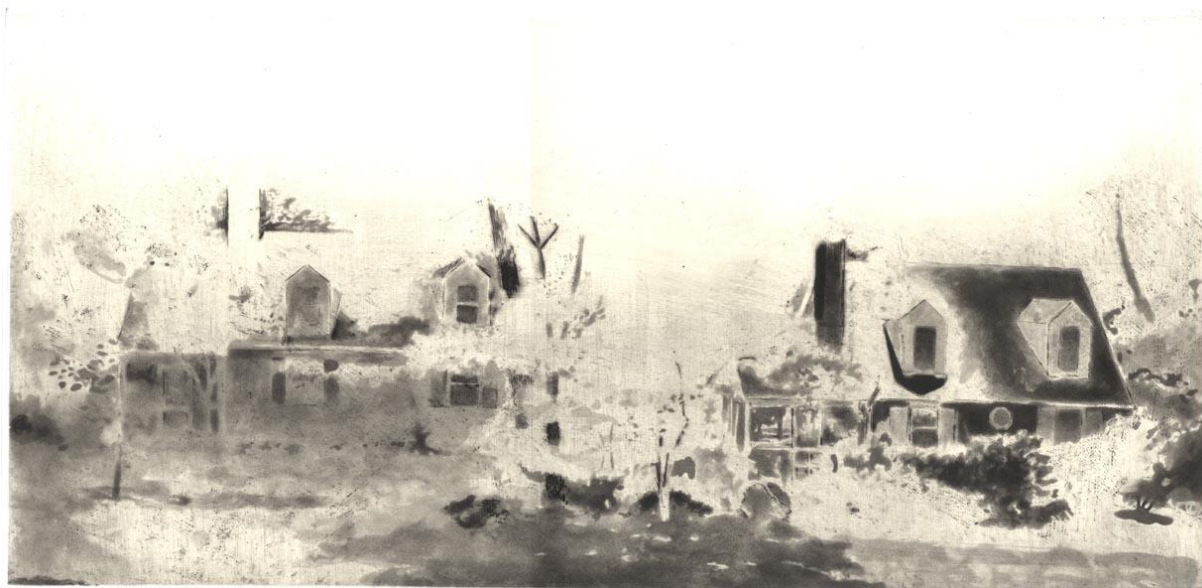




35. *Three Candles*, 1998  
watercolor, graphite, and pen and ink on Fabriano paper  
image: 4 1/4 x 3", sheet: 4 1/4 x 3", frame: 17 x 13"



36. *Three Inch Suite IX: Self-Portrait with Shadows*, 2008-2011  
watercolor, graphite, and conté crayon on Fabriano paper  
image: 3 x 3", sheet: 3 x 3", frame: 14 x 11"



37. *Two Houses: Day*, 1996-97

spitbite aquatint, drypoint, router, and chine collé on Lana Royale and Somerset Satin paper, edition: 11/30

image: 8 1/4 x 17", sheet: 14 3/4 x 22 1/2", frame: 17 1/2 x 26 1/4"



38. *Two Houses: Night*, 1996-97

etching, spitbite aquatint, drypoint, and router on Lana Royale paper, edition: 11/30

image: 7 7/8 x 17", sheet: 14 3/4 x 22 1/2", frame: 17 1/2 x 26 1/4"



39. *Two Windows*: 18-21 November 1986, 1986  
 watercolor and graphite on Fabriano paper  
 image: 2 7/8 x 6 1/4", sheet: 6 x 10 3/4", frame: 11 x 16"



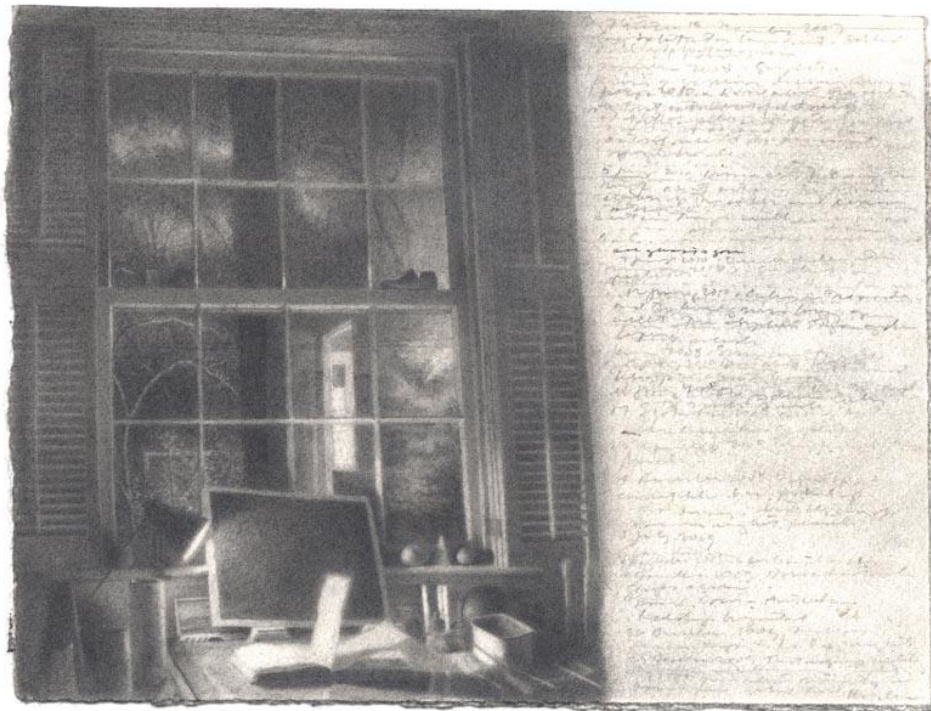
40. *Vessels*, 1992-94  
 watercolor, graphite, and pen and ink  
 image: 4 x 4", sheet: 4 x 4", frame: 13 x 20"





41. *Water Tower*, 2002

mezzotint, spitbite aquatint, etching, and drypoint on Rives BFK paper, edition: 5/40  
image: 5 x 4 1/8", sheet: 15 x 11 1/2", frame: 17 x 13 1/2"



42. *Window with Dark Drawing and Open Journal*, 1986-2010

graphite and pen and ink on Fabriano paper  
image: 4 3/8 x 4 3/4", sheet: 4 3/8 x 4 3/4", frame: 11 x 14"



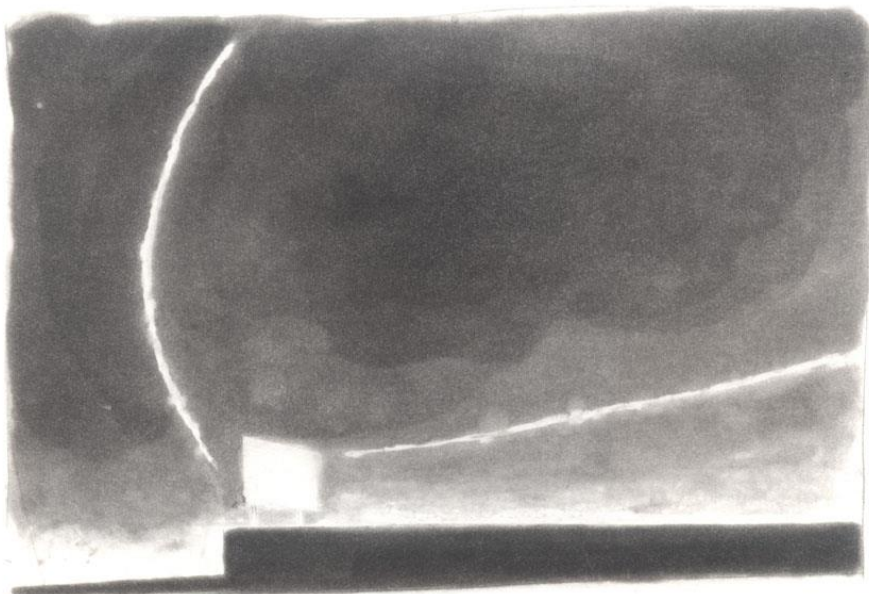
43. *I. Blossoming Pear* from the portfolio *Five Days/Five Nights*, 1996  
 spitbite aquatint on Rives BFK paper, edition: AP  
 image: 4 x 3 1/4", sheet: 13 1/2 x 16", frame: 13 1/2 x 16"



44. *II. Sky* from the portfolio *Five Days/Five Nights*, 1996  
 spitbite aquatint on Rives BFK paper  
 image: 5 x 4", sheet: 13 1/2 x 16", frame: 13 1/2 x 16"



45. III. *Star Magnolia* from the portfolio *Five Days/Five Nights*, 1996  
 spitbite aquatint on Rives BFK paper, edition: AP  
 image: 3 1/4 x 3 3/4", sheet: 13 1/2 x 16", frame: 13 1/2 x 16"



46. IV. *Vapor Trails* from the portfolio *Five Days/Five Nights*, 1996  
 spitbite aquatint on Rives BFK paper, edition: AP  
 image: 4 1/2 x 5", sheet: 13 1/2 x 16", frame: 13 1/2 x 16"



47. V. *Still Life* from the portfolio *Five Days/Five Nights*, 1996  
 spitbite aquatint on Rives BFK paper, edition: AP  
 image: 3 x 3 1/2", sheet: 13 1/2 x 16", frame: 16 x 20"

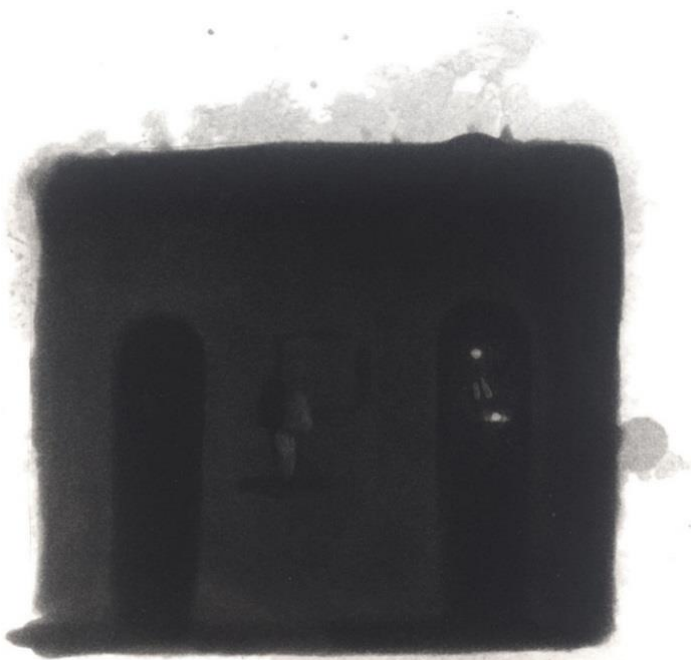


48. VI. *Dusk* from the portfolio *Five Days/Five Nights*, 1996  
 spitbite aquatint on Rives BFK paper, edition: AP  
 image: 3 1/4 x 4", sheet: 13 1/2 x 16", frame: 13 1/2 x 16"





49. VII. *Six Lights* from the portfolio *Five Days/Five Nights*, 1996  
 spitbite aquatint on Rives BFK paper, edition: AP  
 image: 2 1/2 x 5 3/4", sheet: 13 1/2 x 16", frame: 13 1/2 x 16"



50. VIII. *Interior* from the portfolio *Five Days/Five Nights*, 1996  
 spitbite aquatint on Rives BFK paper, edition: AP  
 image: 4 3/4 x 4 1/4", sheet: 13 1/2 x 16", frame: 13 1/2 x 16"



51. IX. *Subdivision* from the portfolio *Five Days/Five Nights*, 1996  
 spitbite aquatint on Rives BFK paper, edition: AP  
 image: 3 3/4 x 3 1/2", sheet: 13 1/2 x 16", frame: 13 1/2 x 16"



52. X. *Comet* from the portfolio *Five Days/Five Nights*, 1996  
 spitbite aquatint on Rives BFK paper, edition: AP  
 image: 3 1/4 x 5 1/4", sheet: 13 1/2 x 16", frame: 13 1/2 x 16"