

*Dust and Shade:* DRAWINGS BY CHARLES RITCHIE



1 *House and Moon*, 2008-2011  
Watercolor, graphite, and conté crayon on  
Fabriano paper  
Sheet/image: 3 3/4 x 2 1/4 in.  
Private Collection



Cornell Fine Arts Museum  
Rollins College  
Winter Park, Florida  
January 28-May 13, 2012



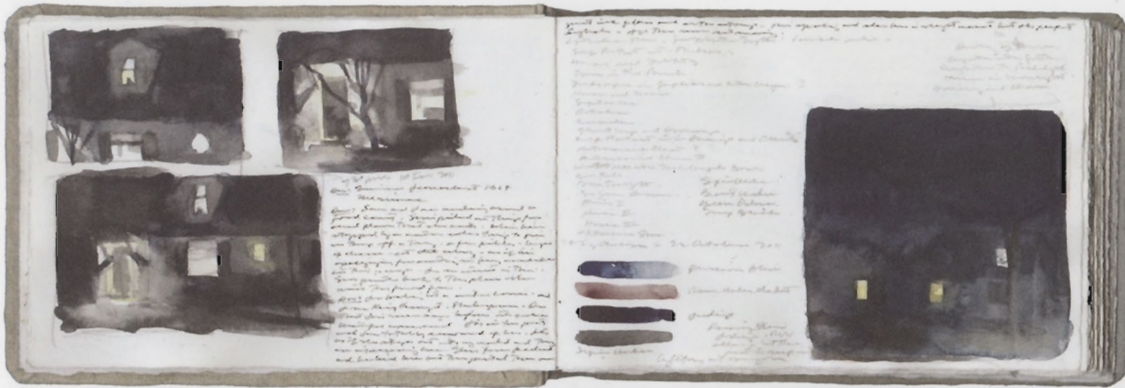
- 2 *Book 132: Spring / Fall 2009, 2009*  
 Watercolor, graphite, pen and ink, and conté crayon on  
 Arches paper in linen-bound volume, 88 pages  
 Closed size: 4 3/8 x 6 1/4 in.  
 Collection of the Artist



- 3 *Book 133: Late Fall 2009 / Spring 2010, 2009-2010*  
 Watercolor, graphite, pen and ink, and conté crayon on  
 Arches paper in linen-bound volume, 96 pages  
 Closed size: 4 3/8 x 6 1/4 in.  
 Collection of the Artist



- 4 *Blue Night, 2001-2011*  
 Watercolor, graphite, and pen and ink on dark-manner  
 aquatint on heavyweight Rives BFK paper  
 Sheet/image: 10 7/8 x 15 in.  
 Collection of the Artist



5 *Book 135: Late Winter / Early Fall 2011, 2011*  
 Watercolor, graphite, pen and ink, and conté crayon on  
 Arches paper in linen-bound volume, 96 pages  
 Closed size: 4 3/8 x 6 1/4 in.  
 Collection of the Artist



6 *Book 134: Late Spring 2010 / Winter 2011, 2010-2011*  
 Watercolor, graphite, pen and ink, and conté crayon on  
 Arches paper in linen-bound volume, 96 pages  
 Closed size: 4 3/8 x 6 1/4 in.  
 Collection of the Artist

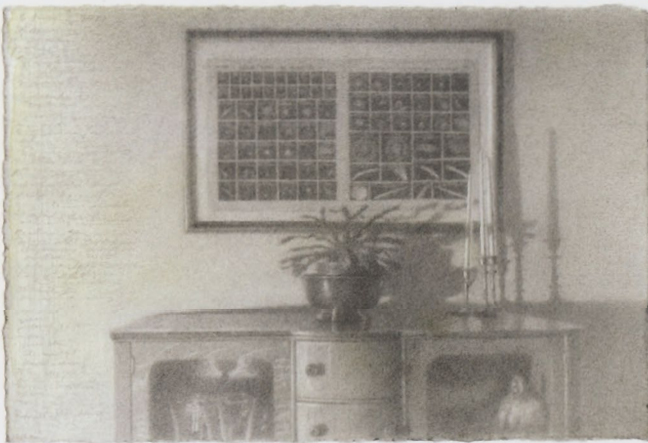


7 *Dogwood Blossoms: 1 May 2011, 2011*  
 Watercolor, graphite, and conté crayon  
 on Fabriano paper  
 Sheet/image: 4 1/8 x 4 1/8 in.  
 Collection of the Artist

Dust and Shade: DRAWINGS BY CHARLES RITCHIE



8 *Graphite Night I*, 2009-2011  
Graphite and watercolor on Fabriano paper  
Sheet/image: 4 3/4 x 9 in.  
Collection of the Artist



9 *Graphite Night II*, 2010-2011  
Graphite and watercolor on Fabriano paper  
Sheet/image: 4 1/8 x 6 1/8 in.  
Collection of the Artist



10 *House and Venus*, 2010  
Watercolor and gum arabic on Fabriano paper  
Sheet/image: 4 x 6 in.  
Collection of the Artist



11 *House: 29 January 2011, 10:30 am, 2011*  
Watercolor and graphite on Fabriano paper  
Sheet/image: 4 x 6 in.  
Collection of the Artist



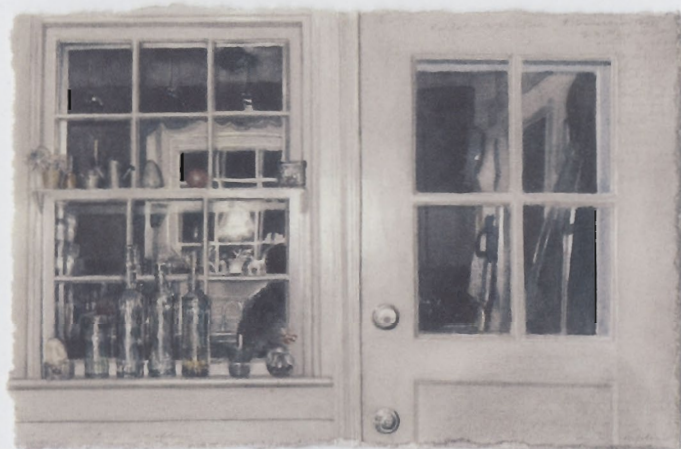
12 *House: 5 February 2011, 10:30 am, 2011*  
Watercolor and graphite on Fabriano paper  
Sheet/image: 4 x 6 in.  
Collection of the Artist



13 *House: 9 February 2011, 4:35 am, 2011*  
Watercolor and graphite on Fabriano paper  
Sheet/image: 4 x 6 in.  
Collection of the Artist



14 *Houses in Moonlight*, 2010–2011  
Watercolor, graphite, and conté crayon on Fabriano paper  
Sheet/image: 2 3/8 x 6 1/8 in.  
Collection of the Artist



15 *Kitchen Windows with Reflections*, 2011  
Watercolor and graphite on Fabriano paper  
Sheet/image: 4 x 6 in.  
Collection of the Artist



16 *Landscape in Conté Crayon and Graphite*, 2006–2011  
Conté crayon, graphite, and watercolor on Fabriano paper  
Sheet/image: 5 3/8 x 11 7/8 in.  
Collection of the Artist



17 *Landscape: Dust and Shade* [work in progress], 1986-  
Graphite and pen and ink on Fabriano paper  
Sheet/image: 9 x 30 1/4 in.  
Collection of the Artist



18 *May*, 1996-2011  
Graphite and charcoal on Fabriano paper  
Sheet/image: 11 1/2 x 16 1/2 in.  
Collection of the Artist



19 *November*, 1999-2011  
Conté crayon, graphite, and watercolor on Fabriano paper  
Sheet/image: 18 x 22 1/4 in.  
Collection of the Artist



20 *October*, 1999-2010  
Conté crayon, graphite, gum arabic, and acrylic matte medium on Fabriano paper  
Sheet/image: 14 x 12 3/8 in.  
Collection of the Artist



21 *Red Fall*, 2005-2011  
Gouache, conté crayon, graphite, and pen and ink on Fabriano paper  
Sheet/image: 10 5/8 x 15 1/8 in.  
Collection of the Artist



22 *Reflection: 11 March 2011, 4 am*, 2011  
Watercolor and graphite on Fabriano paper  
Sheet/image: 4 x 6 in.  
Collection of the Artist





23 *Snow in Two Panels*, 2008-2011  
Watercolor, conte crayon, and graphite on Fabriano paper  
Sheet/image: 4 x 12 in.  
Collection of the Artist



24 *September*, 1999-2010  
Graphite and watercolor on Fabriano paper  
Sheet/image: 12 x 14 in.  
Collection of the Artist



25 *Three Inch Suite IX: Self-Portrait with Shadows*, 2008-2011  
Watercolor, graphite, and conté crayon on Fabriano paper  
Sheet/image: 3 x 3 in.  
Collection of the Artist



26 *Lights in Three Panels*, 2010–2011  
Watercolor, graphite, and conté crayon on Fabriano paper  
Sheet/image: 4 x 9 7/8 in.  
Collection of the Artist



27 *Window with Dark Drawing and Open Journal*, 1986–2010  
Graphite and pen and ink on Fabriano paper  
Sheet/image: 4 3/8 x 4 3/4 in.  
Collection of the Artist



28 *Worktable with Michelangelo Book*, 2009–2011  
Watercolor and graphite on Fabriano paper  
Sheet/image: 4 1/2 x 6 in.  
Collection of Beverly and Christopher With

"It is not in the premise that reality  
Is a solid. It may be a shade that traverses  
A dust, a force that traverses a shade."

—Wallace Stevens (1879–1955)  
Excerpt from "An Ordinary Evening in New Haven"

"Assuredly but dust and shade we are"

—Francesco Petrarca (Petrarch) (1304–1374)  
Excerpt from "She ruled in beauty o'er this heart of mine"

**The drawings in this exhibition evolved in front of subjects I have studied for more than twenty five years. Passing time is reflected in changing motifs and through tracked inscriptions of dates and dreams. Lifelong projects underpin my work; a series of journals begun in 1977 now numbers 136 books. A drawing started in 1986, Landscape: Dust and Shade, continues.**

**Dust is the essential drawing medium. Whether painted as a wash, rubbed with powdery fingers, or drawn in hardened pencils, the shades of light and dark are dust veiling and revealing the image. Poet Wallace Stevens often sought to pinpoint the locus of reality: does it reside in the physical dust, the force of time, or the shadings of the imagination? My desire is to spend a lifetime before my subjects to try and see.**

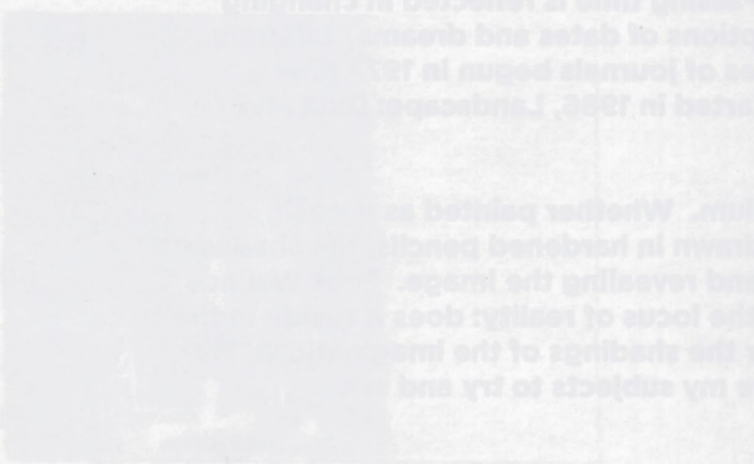
—Charles Ritchie, 2012



29 *Three Windows*, 2010–2011  
Watercolor, graphite, conté crayon, and white ink on Fabriano paper  
Sheet/image: 6 7/8 x 8 3/8 in.  
Private Collection

*Dust and Shade: DRAWINGS BY CHARLES RITCHIE*

25 *Lights in Three Panels*, 2010–2011  
Watercolor, graphite, and conte crayon on Fabriano paper  
Sheet/image: 4 x 9 7/8 in.  
Collection of the Artist



27 *Window with Dark Drawing and Open Journal*, 1986–2010  
Graphite and pen and ink on Fabriano paper  
Sheet/image: 4 3/8 x 4 3/4 in.  
Collection of the Artist



30 *Streetlight: 11–30 November 2011*, 2011  
Watercolor and graphite on Fabriano paper  
Sheet/image: 12 x 5 1/2 in.  
Collection of the Artist



Sponsored in part by the State of Florida, Department of State, Division of Cultural Affairs and the Florida Council on Arts and Culture.