

BravinLee programs

526 West 26th Street #211
New York, NY 10001
p 212 462 4404
f 212 462 4406
www.bravinlee.com

Charles Ritchie
Drawings and Journals

October 19 - November 21, 2012
Opening: Friday, October 19th, 6 - 8pm



November, 1999-2011, conté crayon, graphite, and watercolor on
Fabriano paper, 18 x 22¼ inches

BravinLee programs is very pleased to present our third exhibition of work by Charles Ritchie. BravinLee first learned of Charles Ritchie's astonishing work in 2007 on the website of the esteemed art collector Mickey Cartin.

On the occasion of Charles Ritchie's last show at BravinLee in 2009, Blake Gopnik wrote in the Washington Post:

"His observation is so evenhanded that he manages to strike a perfect balance between the outside seen through the glass and the domestic interior reflected in it. It's nature's own double exposure, caught without the help of film."

About his first exhibition at BravinLee in 2007, Holland Cotter lauded Ritchie's Journals in the New York Times:

"Each small book is filled with marvelous watercolors and all but indecipherable writing. Mr. Ritchie has been making such books for 30 years. They are extraordinary"



Charles Ritchie's exterior subjects, the plots of grass, trees and foliage, streetlights, shadows, reflections and neighboring homes are mostly seen in the dark or in early morning light. The work takes on the feeling of detailed forensic evidence with Ritchie as the artist detective on a stakeout visually recording exactly what he sees and feels. Ostensibly figureless, occasionally the artist's own reflection is glimpsed. But if you have an adequately dark imagination you may assume a prosaically menacing Raymond Burr type from 'Rear Window' is lurking in the shadows.

Ritchie is far more matter of fact in this artist statement:

Artist Statement:

Since 1985 I have been drawing from the same window, observing the evolution of a limited group of subjects. Night often permeates my images, comingling the streetscape with the reflection of my studio. I am intrigued with the merging of interior and exterior spaces and the associations that arise. Yet, the pictures begin with the scene and aim to move deeper, beyond what is seen. Often the invisible is what is most evocative and by offering the viewer a context in which essential details are obscured, I leave things open to interpretation. Night is engaged for its obscuring qualities.

My drawings are constructed over extended periods; months, even years. Darks are usually mixed from other colors, not black, as a means of keeping warm and cool tonalities in flux. Recently, I have been studying closely the colors of night and have broadened my palette to include even more hues.

Variation in size, shape, edge, surface, and technique are critical issues for me. At any one time I am developing many drawings and I often work them for years by building up layers of pigment and paper and breaking them back down with erasures and revisions. The surfaces evolve over these extended periods leaving pentimenti, a history of growth.

While relying on watercolor as a primary medium, some recent works are created in graphite alone or in combination with conté crayon. These friable media allow me to create tone via the slow accretion of line and offer options for easy erasure. With these new approaches, I find myself venturing towards the obscuring effects of daylight as well as night.

After years of scrutiny my subjects have continually accrued greater meaning and mystery for me. As I evolve with them I aim to come to deeper levels of awareness and to more fully interpret the magic and mystery behind the

surface of things.

--Charles Ritchie, 2012, Silver Spring MD

In 2011 Ritchie's one person exhibition at Gallery Joe in Philadelphia traveled to The Cornell Fine Arts Museum, Rollins College, Winter Park, FL and in 2009 his work was the subject of a focus exhibition with The Cartin Collection @ Ars Libri, Boston, MA. In 2008 Ritchie's work was featured in "From the Inside Looking Out: The Journals, Drawings and Prints of Charles Ritchie," at The Gregg Museum of Art & Design, North Carolina State University, Raleigh. Recent group exhibitions include "Watercolors" at Phillips de Pury & Co., New York, "Falling Through Space Drawn by the Line," University of Buffalo Art Gallery," in Buffalo, and "The Fifth Genre: Considering 21st Century Still Life," Galerie Lelong, New York. The artist's work is held in an extensive list of museum and private collections.

For more information please contact the gallery at 212 462 4404 or info@bravinlee.com

Upcoming:

Space Invaders at Lehman College curated by Karin Bravin

October 2, 2012 - January 9, 2013

Opening: October 17, 6 - 8 pm

www.lehman.edu/gallery

SEVEN Miami - December 4 - 9, 2012

2200 NW 2nd Ave.

Miami, FL 33127

www.seven-miami.com

Tom Sanford

100 Little Deaths

December 31 - January 2013

<http://www.tomsanford.com>

BravinLee programs

526 West 26th Street #211

New York, NY 10001

p 212 462 4404

f 212 462 4406

www.bravinlee.com

Drawings



1. *Blue Night*, 2001-2011
watercolor, graphite, and pen and ink on dark-manner aquatint on heavyweight Rives BFK paper
sheet/image: 10 7/8 x 15", frame: 16" x 20"



2. *Bright House*, 2010-2012
watercolor, graphite, and conté crayon on Fabriano paper
sheet/image: 6 x 4", frame: 15 x 12"



3. *Composition with Porchlight*, 2010-2011
watercolor and graphite on Fabriano paper
sheet/image: 4 5/8 x 2", frame: 14 x 11"



4. *Composition with Summer Foliage*, 2010-2011
watercolor and graphite on Fabriano paper
sheet/image: 3 1/8 x 3 3/4", frame: 14 x 11"



5. *Dark Interior with Mirror*, 2008-2012
watercolor and graphite on Fabriano paper
sheet/image: 4 1/4 x 6 1/4"



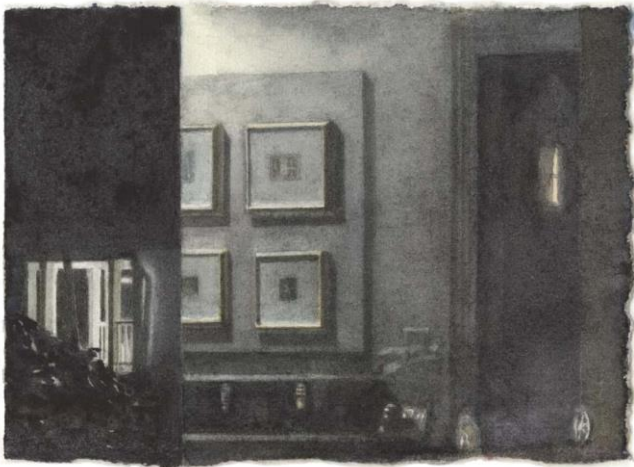
6. *Doorway and Chair*, 2010-2012
graphite and watercolor on Fabriano paper
sheet/image: 6 x 4", frame: 15 x 12"



7. *Dogwood Blossoms*: 1 May 2011, 2011
watercolor, graphite, and conté crayon on Fabriano paper
sheet/image: 4 1/8 x 4 1/8", frame: 12 x 14"



8. *Graphite Night II*, 2010-2011
graphite and watercolor on Fabriano paper
sheet/image: 4 1/8 x 6 1/8", frame: 12 x 15"



9. *House and Drawings*, 2012
watercolor and graphite on Fabriano paper
sheet/image: 2 3/8 x 3 1/4", frame: 11 x 14"



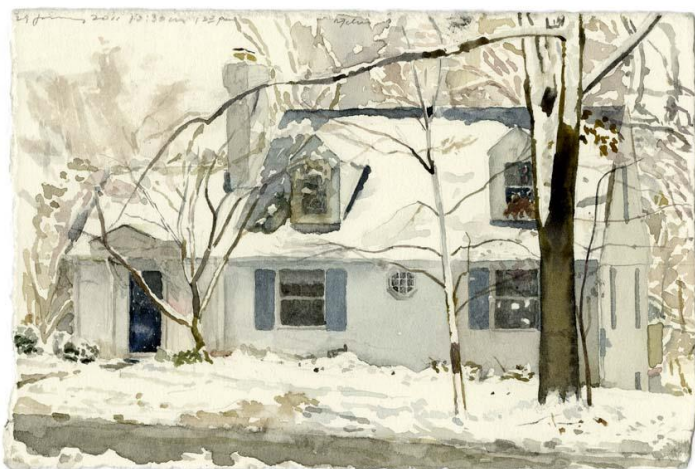
10. *House and Venus*, 2010
watercolor and gum Arabic on Fabriano paper
sheet/image: 4 x 6", frame: 12 x 15"



11. *House: 1 October 2011, 2011-2012*
watercolor, graphite, and pen and ink on Fabriano paper
sheet/image: 4 1/8 x 6", frame: 11 x 13"



12. *House: 1 October 2012, 2012*
watercolor, graphite, and pen and ink on Fabriano paper
sheet/image: 4 1/8 x 6", frame: 11 x 13"
\$3,500. + \$200 frame



13. *House*: 29 January 2011, 10:30 am, 2011
watercolor and graphite on Fabriano paper
sheet/image: 4 x 6", frame: 12 x 14"



14. *House*: 5 February 2011, 10:30 am, 2011
watercolor and graphite on Fabriano paper
sheet/image: 4 x 6", frame: 12 x 14"



15. *House: 9 February 2011, 4:35 am, 2011*
watercolor and graphite on Fabriano paper
sheet/image: 4 x 6", frame: 12 x 14"



16. *Kitchen Windows with Reflections II, 2012*
watercolor and graphite on Fabriano paper
sheet/image: 4 x 6", frame: 11 x 14"



17. *Last Light*, 2012
watercolor and graphite on Fabriano paper
sheet/image: 5 7/8 x 10 5/8", frame: 12 x 17"



18. *Landscape: Dust and Shade* [work in progress], 1986-
graphite and pen and ink on Fabriano paper
sheet/image: 9 x 30 1/4", frame: 17 x 38"



19. *Lights in Three Panels*, 2010-2011
watercolor, graphite, and conté crayon on Fabriano paper
sheet/image: 4 x 9 7/8", frame: 10 x 16"



20. *May*, 1996-2011
graphite and charcoal on Fabriano paper
sheet/image: 11 1/2 x 16 1/2", frame: 18 x 22 1/2"



21. *November*, 1999-2011
conté crayon, graphite, and watercolor on Fabriano paper
sheet/image: 18 x 22 1/4", frame: 27 x 23"



22. *October*, 1999-2010
conté crayon, graphite, gum Arabic, and acrylic matte medium on Fabriano paper
sheet/image: 14 x 12 3/8", frame: 19 x 17 1/2"



23. *Red Fall*, 2005-2011
gouache, conté crayon, graphite, and pen and ink on Fabriano paper
sheet/image: 10 5/8 x 15 1/8", frame: 16 x 20"



24. *Reflection*: 23 March 2011, 2011-2012
watercolor, conté crayon, and graphite on Fabriano paper
sheet/image: 2 5/8 x 4 1/2", frame: 12 x 15"



25. *Self-Portrait with Night XI*, 2011-12
watercolor, graphite and conté crayon on Fabriano paper
image: sheet: 5 1/2 x 12", frame: 12 x 18"



26. *Self-Portrait with Night: Two Panels III*, 2005-2012
watercolor and graphite on Fabriano paper
image (two sheets): 5 1/2 x 14 1/4"



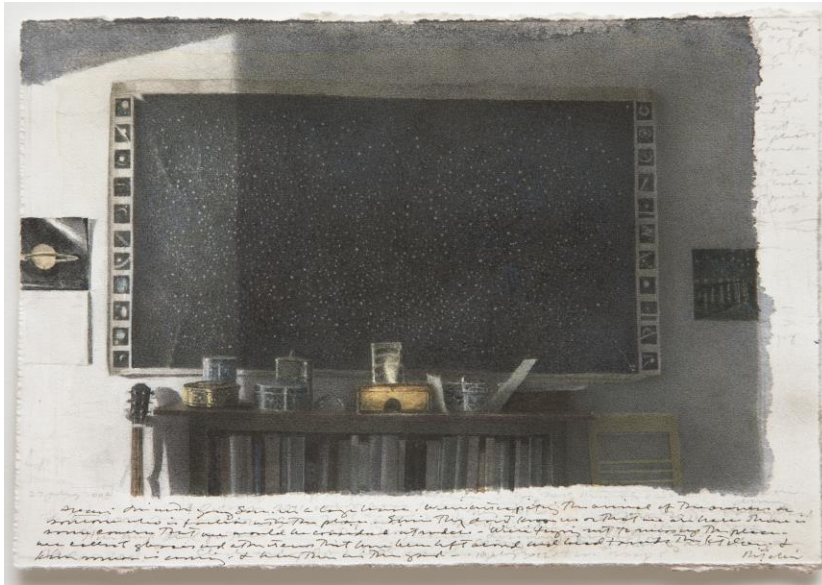
27. *September*, 1999-2010
graphite and watercolor on Fabriano paper
sheet/image: 12 x 14", frame: 17 x 19"



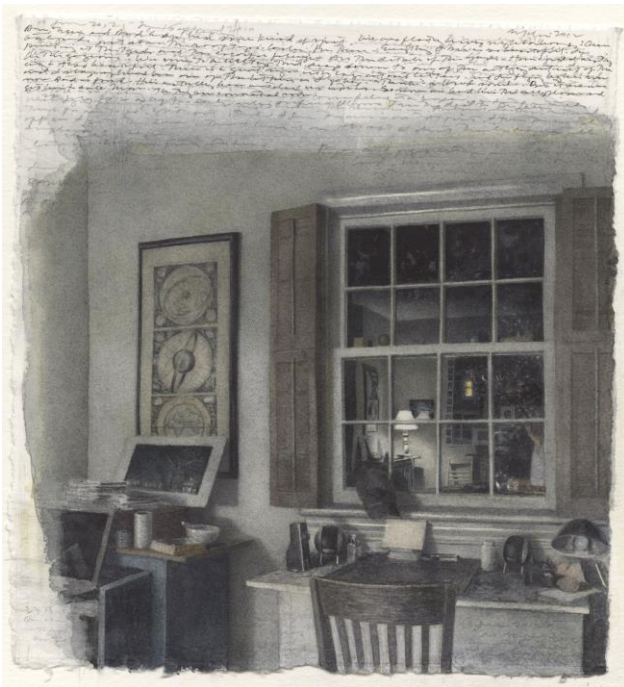
28. *Snow in Two Panels*, 2008-2011
watercolor, conte crayon, and graphite on Fabriano paper
sheet/image: 4 x 12", frame: 11 x 19"



29. *Streetlight*: 11-30 November 2011, 2011
watercolor and graphite on Fabriano paper
sheet/image: 12 x 5 1/2", frame: 15 x 9"



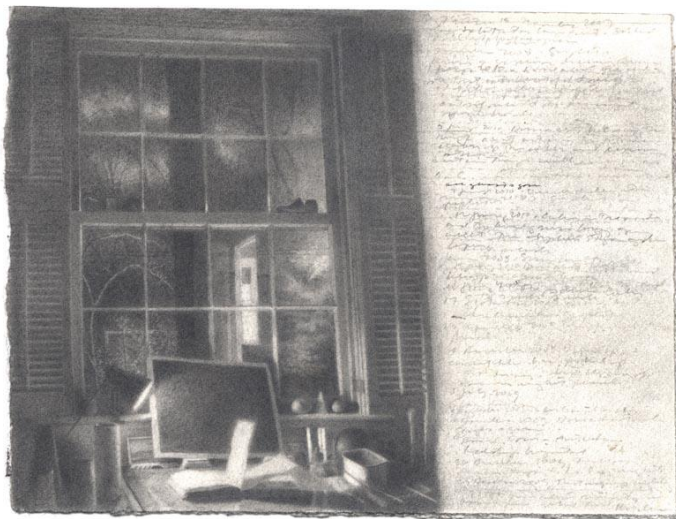
30. *The Star Map*, 2005-2012
watercolor and graphite on Fabriano paper.
sheet/image: 4 x 6", frame: 12 x 15"



31. *Studio Corner*, 2010-2012
watercolor, graphite, and pen and ink on Fabriano paper
sheet/image: 6 7/8 x 6 3/8"



32. *Winter Night*, 1995-2012
watercolor, graphite and conté crayon on Fabriano paper
sheet/image: 10 ½ x 16 7/8", frame: 21 x 14 ½"



33. *Window with Dark Drawing and Open Journal*, 1986-2010
graphite and pen and ink on Fabriano paper
sheet/image: 4 3/8 x 4 3/4", frame: 12 x 15"

Journals



34. Book 129, Fall 2007 / Winter 2008

Sunday 30 September 2007 to Wednesday 27 February 2008

4 1/4" x 6.25", landscape format, linen cover, 88 pages



35. Book 130, Late Winter / Late Summer 2008

Thursday 28 February 2008 to Saturday 13 September 2008

4 1/4" x 6.25", landscape format, linen cover, 96 pages



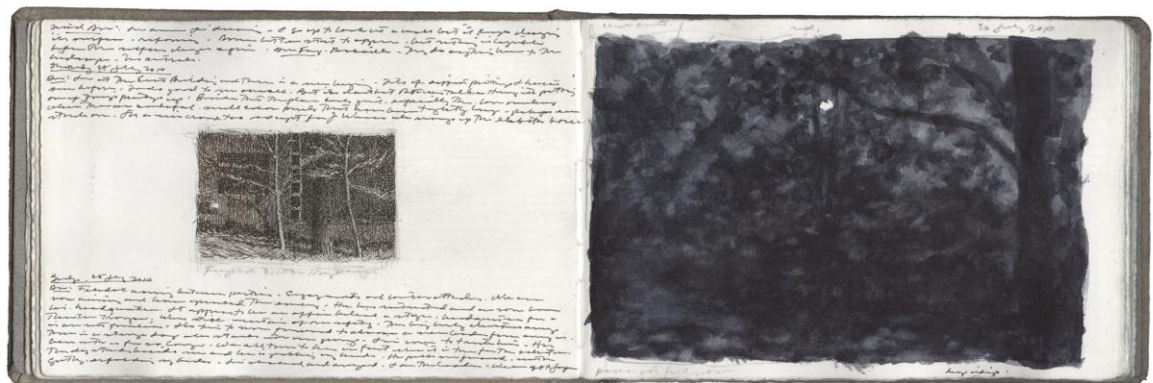
36. Book 131, Fall 2008 / Early Spring 2009
 Tuesday 16 September 2008 to Friday 17 April 2009
 4 1/4" x 6.25", landscape format, linen cover, 96 pages



37. Book 132, Spring / Fall 2009
 Sunday 19 April 2009 to Friday 23 October 2009
 4 1/4" x 6.25", landscape format, linen cover, 96 pages



38. Book 133, Late Fall 2009 / Spring 2010
 Sunday 24 October 2009 to Wednesday 2 June 2010
 4 1/4" x 6.25", landscape format, linen cover, 96 pages



39. Book 134, Late Spring 2010 / Winter 2011
 Thursday 3 June 2010 to Tuesday 18 January 2011
 4 1/4" x 6.25", landscape format, linen cover, 96 pages



40. Book 135, Late Winter / Early Fall 2011
 Wednesday 19 January 2011 to Saturday 24 September 2011
 4 1/4" x 6.25", landscape format, linen cover, 96 pages



41. Book 136, Fall 2011 / Summer 2012
 Sunday 25 September 2011 to Saturday 4 August 2012
 4 1/4" x 6.25", landscape format, linen cover, 96 pages