

Charles Ritchie

Charles Ritchie

From The Inside Looking Out

November 1 - December 20, 2008

reception

Saturday, November 1, 2008

4:00 - 6:00 P.M.

Artist talk at 3:30 on Nov. 1

gallery hours

Wednesday - Saturday 12 - 5:30 P.M.

and by appointment

Gallery Joe will be closed
Nov. 27 & 28 for Thanksgiving



Gallery Joe

302 Arch Street
Philadelphia, PA 19106
215.592.7752

mail@galleryjoe.com

www.galleryjoe.com



1. *Cul-de-Sac*, 1993
watercolor and graphite on Fabriano paper
image: 6 1/8 x 7 1/4", sheet: 6 1/8 x 7 1/4",
frame: 11 x 14"



2. *Daffodils and Star Map*, 1988
watercolor and graphite on Fabriano paper
image: 4 3/4 x 3", sheet: 8 1/4 x 7 3/8", frame: 14 x
11"



3. *Dark Rocker*, 1988
watercolor, graphite, and pen and ink on Fabriano
paper
image: 4 3/8 x 3 5/8", sheet: 8 5/8 x 7 1/8", frame: 14 x
11"



4. *Drawing with Cat*: 18 December 1985 - 6 February 1993, 1993
watercolor and graphite on two sheets of Fabriano paper
image: two panels overall: 4 1/4 x 9 1/2", sheet: two panels overall: 4 1/4 x 9 1/2", frame: 11 x 16"



5. *Erased Self-Portrait*, 1983
watercolor, graphite, and pen and ink on Fabriano paper
image: 4 x 7", sheet: 4 x 7", frame: 11 x 14"



6. *Folded Self-Portrait with Night I: Graphite*, 2007
graphite on Fabriano paper
image: 4 1/4 x 12 1/4", sheet: 4 1/4 x 12 1/4", frame: 11 x 19"



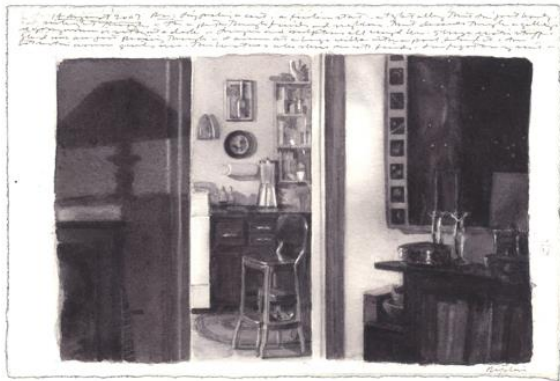
7. *Front Porch Light*, 2007-2008
watercolor, graphite, and pen and ink on Fabriano paper
image: 4 x 6", sheet: 4 x 6", frame: 11 x 14"



8. *Gibbous Moon*, 1984
watercolor, pen and ink, and graphite on Fabriano paper
image: 6 1/2 x 4", sheet: 6 1/2 x 4", frame: 14 x 11"



9. *Interior/Exterior*, 1989
watercolor, graphite, and
pen and ink on Fabriano
paper
image: 18 x 37", sheet: 8
1/8" x 29 3/8",
frame: 16 x 37 1/2"



10. *Kitchen Doorway: 14 June 2007*, 2007
watercolor, graphite, and pen and ink on
Fabriano paper
image: 5 3/4 x 7 1/4", sheet: 5 3/4 x 7 1/4",
frame: 12 3/4 x 14 3/4"



11. *Landscape in Graphite I*,
2007-2008
graphite on Fabriano paper
image: 5 5/8 x 12", sheet: 5
5/8 x 12", frame: 11 x 19"



12. *Late Sun*, 1990-1996
watercolor, graphite, conte crayon,
litho crayon, and pen and ink on
Fabriano paper
image: 5 1/4 x 9 7/8", sheet: 5 1/4 x
9 7/8", frame: 11 1/2 x 16 1/2"



13. *Light through Porch*, 1981
pen and ink, graphite, and wash on Fabriano paper
image: 3 3/4 x 2 3/4", sheet: 3 3/4 x 2 3/4", frame: 14 x 11"



14. *Light under Porch*, 1981
pen and ink, graphite, and wash on Fabriano paper
image: 3 3/4 x 2 3/4", sheet: 3 3/4 x 2 3/4", frame: 14 x 11"



15. *Midday Rain*, 1994-2007
watercolor and graphite on
Fabriano paper
image: 4 7/8 x 9 3/4", sheet: 4
7/8 x 9 3/4", frame: 11 1/2 x 16
1/2"



16. *Night Studio with Diffenbachia*, 1985
watercolor and graphite on Fabriano paper
image: 4 7/8 x 4 7/8", sheet: 4 7/8 x 4 7/8",
frame: 11 1/2 x 11 1/2"



17. *Paper Whites and Pitcher*, 1984
watercolor, graphite, and pen and ink on Fabriano paper
image: 10 1/4 x 4 1/2" two panels, sheet: 10 1/4 x 4 1/2" two panels,
framed 14 x 11"



18. *Reflected Worktable: 12 November 1985, 1985*
watercolor, graphite, and pen and ink on Fabriano paper
image: 7 9/16 x 7 1/2", sheet: 7 9/16 x 7 1/2",
frame: 16 x 13 1/2"



19. *Reflection, 1982*
pen and ink and wash on Fabriano paper
image: 5 1/8 x 5 3/8", sheet: 5 1/8 x 5 3/8",
frame: 11 1/2 x 11 1/2"



20. *Reflection with Rocking Chair and Pillows, 1985*
watercolor and graphite on Fabriano paper
image: 5 1/4 x 5 3/4", sheet: 5 1/4 x 5 3/4",
frame: 11 x 14"



21. *Rocking Chair in Sunlight*, 1989
watercolor, graphite, and pen and ink on Fabriano paper
image: 6 7/8 x 5 3/8", sheet: 9 1/8 x 8 1/4", frame: 14 x 11"



22. *Self-Portrait: Pittsburgh*, 1979
acrylic and tempera paint on wove paper
image: 6 x 7 1/4", sheet: 6 x 7 1/4",
frame: 12 3/4 x 14 3/4"



23. *Self-Portrait with Blossoming Star Magnolia*, 2002-2008
watercolor, graphite, and gouache on Fabriano paper
image: 4 x 3", sheet: 4 x 3",
frame: 14 x 11"



24. *Self-Portrait with Double Reflection*, 2007-2008
watercolor, graphite, and pen and ink
on Fabriano paper
image: 4 x 6", sheet: 4 x 6",
frame: 11 x 14"



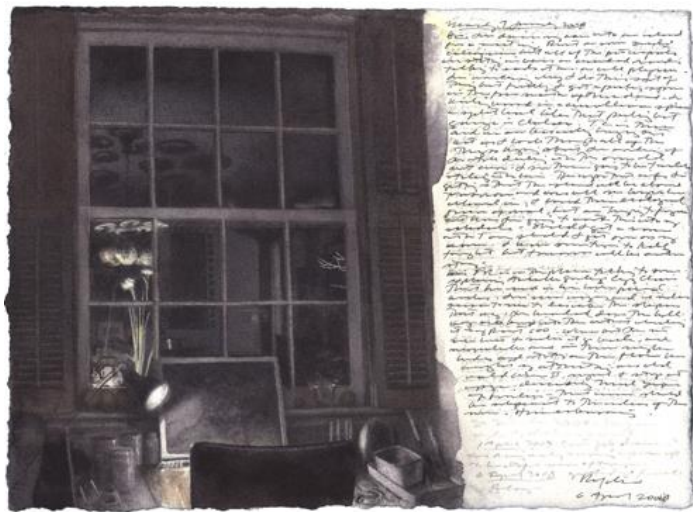
25. *Self-Portrait with Full Moon and Tree: Second Study*, 1988
watercolor, graphite, and pen and ink on Fabriano paper
image: 2 3/4 x 4 3/8", sheet: 8 5/8 x 5 7/8", frame: 14 x 11"



26. *Self-Portrait with Night: Side Panels I*, 2006-2008
watercolor and graphite on Fabriano paper
image: 5 3/4 x 17 1/4",
sheet: 5 3/4 x 17 1/4",
frame: 11 3/4 x 23 1/2"



27. *Self-Portrait with Night*
X, 2006
watercolor, conté crayon,
and graphite on Fabriano
paper
image: 5 1/2 x 12", sheet: 5
1/2 x 12", frame: 13 x 20"



28. *Self-Portrait with Paper Whites
and Drawing*, 2008
watercolor, graphite, and pen and
ink on Fabriano paper
image: 4 1/4 x 5 7/8", sheet: 4 1/4 x
5 7/8", frame: 11 x 14"



29. *Self-Portrait: 10 March 1988*, 1988
watercolor and pen and ink on Fabriano
paper
image: 1 3/4 x 2 1/2", sheet: 5 7/8 x 7
3/4", frame: 9 x 11"



30. *Skyscraper*, 1978
 acrylic and tempera paint on wove paper
 image: 3 3/4 x 3 3/8", sheet: 4 1/4 x 4 1/2", frame: 14 x 11"



31. *Sound Lights*, 1982
 pen and ink and wash on Fabriano paper
 image: 3 3/8" x 5 1/4", sheet: 3 3/8" x 5 1/4", frame: 11 x 14"



32. *Streetlight and Porchlight*, 2008
 watercolor and graphite on Fabriano paper
 image: 10 1/2 x 7 1/4", sheet: 10 1/2 x 7 1/4", frame: 17 x 14"



33. *Studio Corner with Clock*, 1992
watercolor and graphite on Fabriano paper
image: 2 7/8 x 2", sheet: 2 7/8 x 2", frame: 11 x 9"



34. *Summer Night with Interior*, 2007
watercolor, graphite, and white pen and ink on Fabriano paper
image: 4 1/2 x 4 1/4", sheet: 4 1/2 x 4 1/4", frame: 14 x 11"



35. *The Bend*, 1984
watercolor and graphite on Fabriano paper
image: 3 5/8 x 14 7/8", sheet: 3 5/8 x 14 7/8", frame: 9 1/2 x 21"



36. *Three Candles*, 1998
watercolor, graphite, and pen and ink on Fabriano paper
image: 4 1/4 x 3", sheet: 4 1/4 x 3", frame: 17 x 13"



37. *Three Inch Suite V: Reflections*, 2005-2008
watercolor and graphite on Fabriano paper
image: 3 1/8 x 2 1/4", sheet: 3 1/8 x 2 1/4", frame: 11 x 9"



38. *Three Inch Suite VI: Self-Portrait with Antares*, 2006-2008
watercolor, graphite, and pen and ink on Fabriano paper
image: 3 x 4 3/8", sheet: 3 x 4 3/8",
frame: 11 x 14"



39. *Two Windows: 18-21 November 1986*, 1986
watercolor and graphite on Fabriano paper
image: $2\frac{7}{8} \times 6\frac{1}{4}$ ", sheet: $6 \times 10\frac{3}{4}$ ", frame: 11×16 "



40. *Window with Downspout*, 1985
watercolor and graphite on Fabriano paper
image: $6\frac{3}{8} \times 2\frac{5}{8}$ ", sheet: $6\frac{3}{8} \times 2\frac{5}{8}$ ", frame: 14×11 "



41. *Window with Drawings and Chart*, 2007
watercolor, graphite, gouache, and pen and ink
on Fabriano paper
image: $5\frac{3}{4} \times 7\frac{1}{4}$ ", sheet: $5\frac{3}{4} \times 7\frac{1}{4}$ ",
frame: $12\frac{3}{4} \times 14\frac{3}{4}$ "



42. *Window with Moon and Star*, 1983
pen and ink, graphite, and watercolor on Fabriano paper
image: 4 1/4", sheet: 2 3/4", frame: 14 x 11"



43. *Worktable: 22 September 1990*, 1990
watercolor, graphite, and pen and ink on Fabriano paper
image: 5 1/2 x 5 3/4", sheet: 7 3/8 x 10 5/16",
frame: 11 x 14"