

# BravinLee programs

**Charles Ritchie: Drawings and Journals** Opening reception, Wednesday October 2<sup>th</sup>, 6-8 pm.

BravinLee Programs is very pleased to present our 5th solo Charles Ritchie exhibition.

Charles Ritchie's interior/exterior subjects, the suburban plots of grass, trees and foliage, streetlights, shadows, reflections and neighboring homes are mostly seen in the dark or in early morning light. The work takes on the feeling of aestheticized surveillance with Ritchie as the consummate artist-detective; visually recording the scene in all its hyper-complexity and nuance.

## **Artist Statement:**

Since 1985 I have been drawing from the same window, observing the evolution of a limited group of subjects. Night often permeates my images, comingling the streetscape with the reflection of my studio. I am intrigued with the merging of interior and exterior spaces and the associations that arise. Yet, the pictures begin with the scene and aim to move deeper, beyond what is seen. Often the invisible is what is most evocative and by offering the viewer a context in which essential details are obscured, I leave things open to interpretation. Night is engaged for its obscuring qualities.

My tendency has been to mix darks from other colors, not black, as a means of keeping warm and cool tonalities in flux, while adding variant hues to evoke shades of the night. In recent years, however, I have found that adding super-black acrylic paint selectively, in final layers, can enhance atmosphere, darkness, and contrast. I have also employed fine point pen dipped in black ink to create texture and emphasize radiance and luminosity. And in a new series of works, paper is first coated with super-black acrylic paint and then highlights are painted in white.

My drawings are constructed over extended periods; months and years. Variation in size, shape, edge, surface, and technique are critical issues for me. At any one time I am developing many drawings and I often work them for years by building up layers of pigment and paper and breaking them back down with erasures and revisions. The surfaces evolve over these extended periods leaving pentimenti, a history of growth, while suggesting apparitions in the evaporating and reconstituting elements.

I collect sketches for drawings in my journals. Some drawings have multiple related studies that can be found across numerous books. Others have no preliminary studies and are essentially worked out in the drawing. My handwriting is a private note hand that does not necessarily inform the adjacent drawings, but usually traces my train of thought, daily meditations and discoveries, and dreams. I also think of it as a drawn, gestural presence.

After years of scrutiny, my subjects have continually accrued greater meaning and mystery for me. As I evolve with them I aim to come to deeper levels of awareness and to more fully interpret the magic and mystery behind the surface of things.

**Charles Ritchie 2024, Silver Spring MD**

# BravinLee programs

On the occasion of Charles Ritchie's 2009, BravinLee exhibition, Blake Gopnik wrote in the Washington Post:

**"His observation is so evenhanded that he manages to strike a perfect balance between the outside seen through the glass and the domestic interior reflected in it. It's nature's own double exposure, caught without the help of film."**

About his first exhibition at BravinLee in 2007, Holland Cotter lauded Ritchie's Journals in the New York Times:

**"Each small book is filled with marvelous watercolors and all but indecipherable writing. Mr. Ritchie has been making such books for 30 years. They are extraordinary"**

Ritchie received his BFA in graphic design at the University of Georgia and his MFA in painting at Carnegie Mellon University. His work has been exhibited extensively including Jason Haam, Seoul, South Korea and four shows at Gallery Joe, Philadelphia, PA, including two that traveled; one to The Cornell Fine Arts Museum, Rollins College, Winter Park, FL and another to The Gregg Museum of Art & Design, North Carolina State University, Raleigh. His work was also the subject of a focus exhibition with The Cartin Collection @ Ars Libri, Boston, MA. The artist has made prints with Center Street Studio, Milton, MA, since 1994. Group exhibitions include, A Decade of Drawings: New Acquisitions, 2014–2024, at The Columbus Museum, Columbus, GA; The Artist's Hand: Selections from the William Louis-Dreyfus Foundation, The Watson Art Gallery at Naples Art, Naples, FL; and shows at the Ballinglen Museum of Contemporary Art, Ballycastle, Ireland; r/e projects, espacio artkunstarte, Madrid, Spain; Phillips de Pury & Co., New York; and Galerie Lelong, New York, just to name a few. Ritchie's works are in the collection of the Baltimore Museum of Art, Baltimore, MD; the Fogg Art Museum, Harvard University Art Museums, Cambridge, MA; the Fine Arts Museums of San Francisco, San Francisco, CA; the Metropolitan Museum of Art, New York, NY; The New York Public Library, New York, NY; the National Gallery of Art, Washington D.C.; the Pennsylvania Academy of the Fine Arts, Philadelphia, PA; the Philadelphia Museum of Art, Philadelphia, PA; Yale University Art Gallery, New Haven, CT; and many more.

## 25 Drawings

1. *Astronomical Chart and Sunlight*, 2019-2023

pen and ink, graphite, watercolor, and acrylic on Fabriano paper

sheet: 5 3/4 x 8 1/4", frame: 13 7/8 x 15 7/8"



2. *Dark Observatory I*, 2023- 2024  
acrylic and graphite on Fabriano paper  
sheet: 5 1/2" x 10 3/4", frame: 12 7/8 x 19 3/8"



3. *Dark Observatory II*, 2023-2024  
acrylic and graphite on Fabriano paper  
sheet: 5 1/8" x 11 7/8", frame: 12 7/8 x 17 7/8"



4. *Dark Observatory III*, 2023-2024  
acrylic and graphite on Fabriano paper  
sheet: 7 5/8 x 5 3/8", frame: 15 3/8 x 12 7/8"





5. *Doorway II*, 2018-2024  
watercolor, graphite, and pen and ink on Fabriano paper  
sheet: 4 7/8 x 9 1/2", frame: 11 7/8 x 17 3/8"

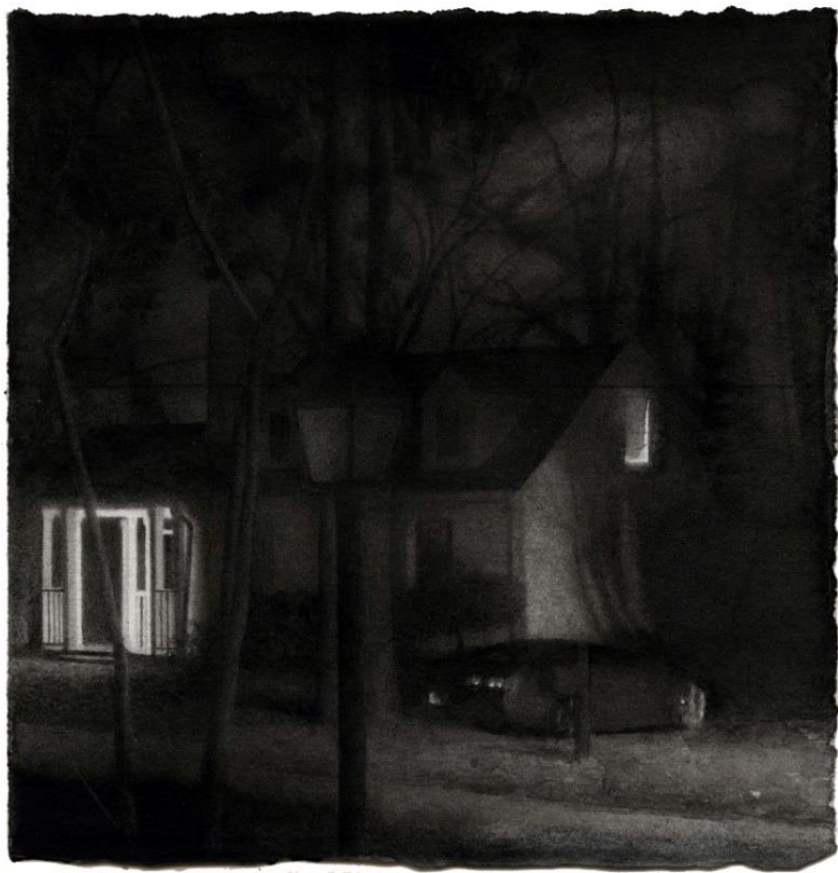


6. *Doorway and Drawings II*, 2021-2023

pen and ink, watercolor, graphite, and acrylic on Fabriano paper

sheet: 4 1/2 x 7 1/8", frame: 12 7/8 x 13 3/8"





7. *House I*, 2012-2013  
watercolor and graphite on Fabriano paper  
sheet: 4 x 4", frame: 12 3/8 x 11 7/8"



8. *House III*, 2013  
watercolor and graphite on Fabriano paper  
sheet: 3 3/4 x 4", frame: 12 1/8 x 11 7/8"

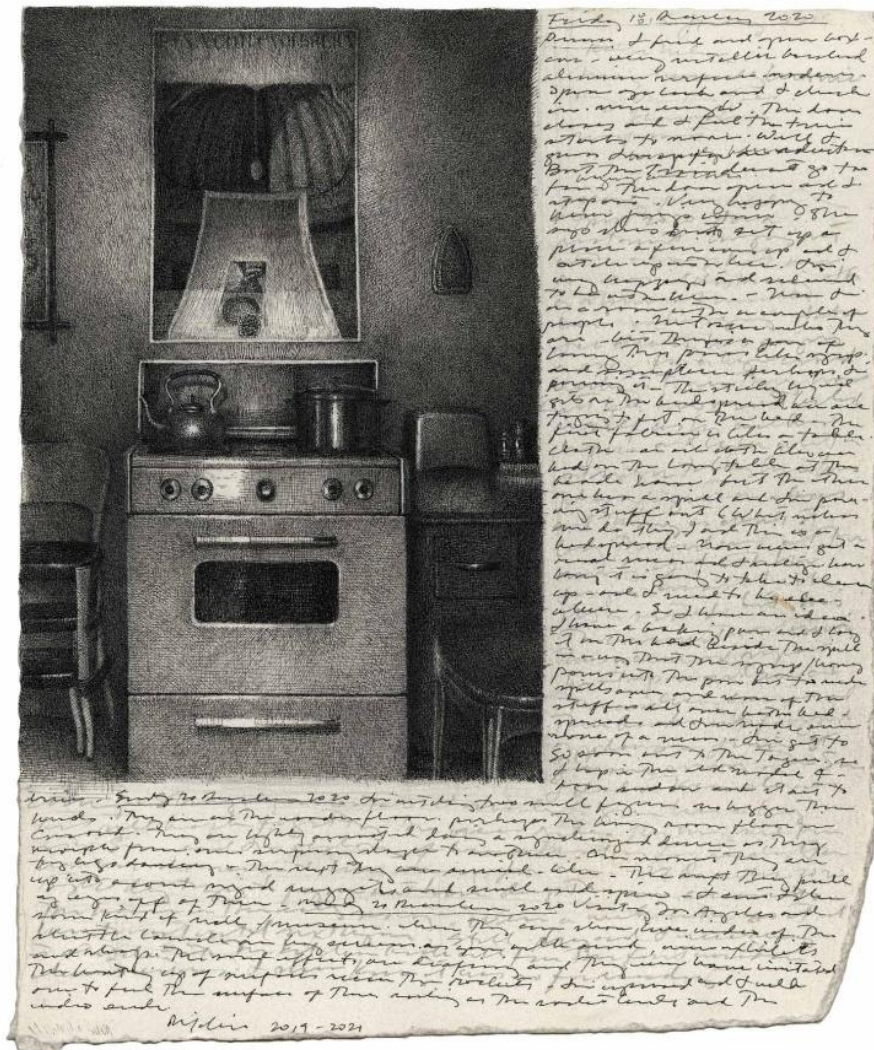


9. *Kitchen I*, 2017-2023  
pen and ink, watercolor, graphite, and acrylic on Fabriano paper  
sheet: 6 x 7 1/2", frame: 13 7/8 x 14 3/8"



10. *Kitchen in Pen and Ink*, 1999-2023  
pen and ink and graphite on Fabriano paper  
sheet: 4 3/4 x 2 5/8", frame: 12 x 9 7/8"





11. Kitchen Stove I, 2019-2021

pen and ink, watercolor, gouache, and graphite on Fabriano paper  
sheet: 6 ½ x 6 3/8", frame: 13 ¾ x 11 7/8"





12. *Kitchen: Study in Black*  
watercolor and graphite on Fabriano paper  
sheet: 6 x 7 5/8", frame: 13 7/8 x 14 3/8"



13. *Reflection with Gibbous Moon II*, 2020-2021  
watercolor, gouache, pen and ink, and graphite on Fabriano paper  
sheet: 6 ¼ x 3 1/2", frame: 13 3/8 x 10 7/8"



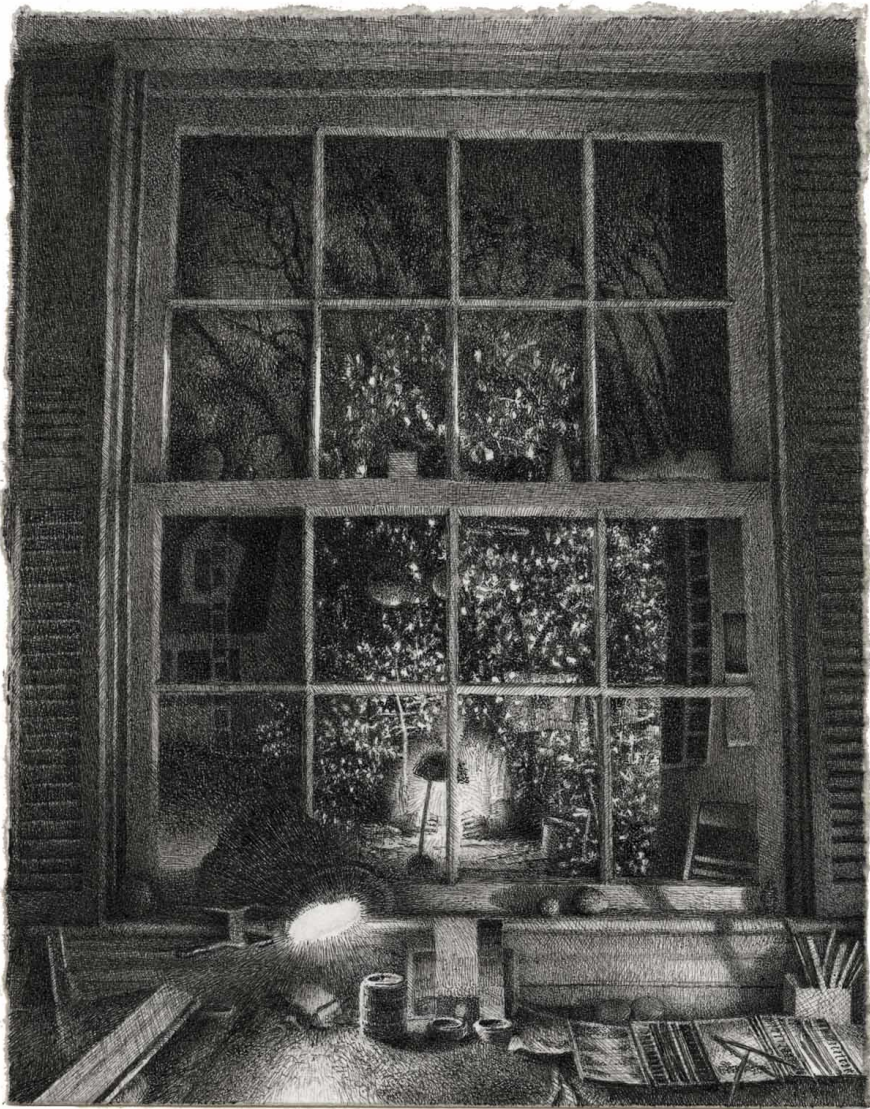
14. *Long Twilight I*, 2017-2023

watercolor, graphite, pen and ink, and acrylic on Fabriano paper  
sheet: 5 5/8 x 13 1/2", frame: 13 3/8 x 20 7/8"



15. *Reflection with Streetlight and Leaves*, 2017-2020  
watercolor, gouache, graphite, and pen and ink on Fabriano paper  
sheet: 5 1/4 x 5 7/8", frame: 12 7/8 x 13 7/8"





16. *Self-Portrait with Fall Leaves*, 2019-2021

black pen and ink, gouache, watercolor, and graphite on Fabriano paper  
sheet: 5 x 4", frame: 13 7/8 x 11 7/8"





17. *Self-Portrait with First Light*, 2019-2024  
watercolor, graphite, pen and ink, and acrylic on Fabriano paper  
sheet: 4 7/8 x 3 15/16", frame: 13 7/8 x 15 7/8"



18. *Self-Portrait with Lamps and Open Journal*, 2019-2020  
watercolor, gouache, and graphite on Fabriano paper  
sheet: 5 x 3 7/8", frame: 13 7/8 x 11 7/8"



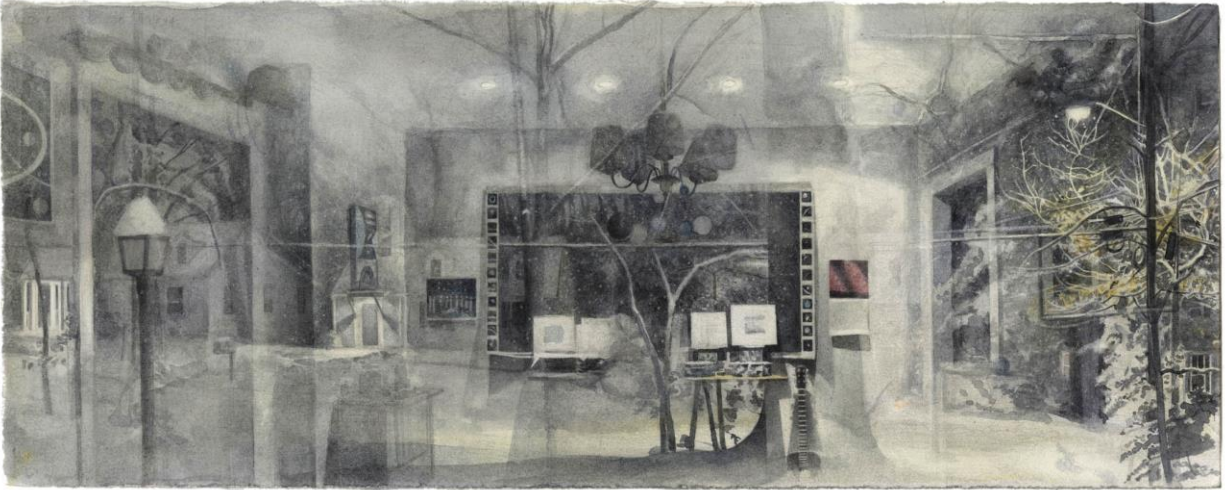
19. *Self-Portrait with Night Sky*, 2020-2023  
pen and ink, watercolor, graphite, and acrylic on Fabriano paper  
sheet: 5 1/4 x 6 3/8", frame: 13 7/8 x 11 7/8"





20. *Self-Portrait with Saturn*, 2011-2023

pen and ink, watercolor, graphite, and acrylic on Fabriano paper  
sheet: 4 1/8 x 6", frame: 11 3/4 x 13 7/8"



21. *Snow Night*, 2014-2019  
watercolor and graphite on Fabriano paper  
sheet: 5 ½ x 13 ¾", frame: 12 ¾ x 20 5/8"





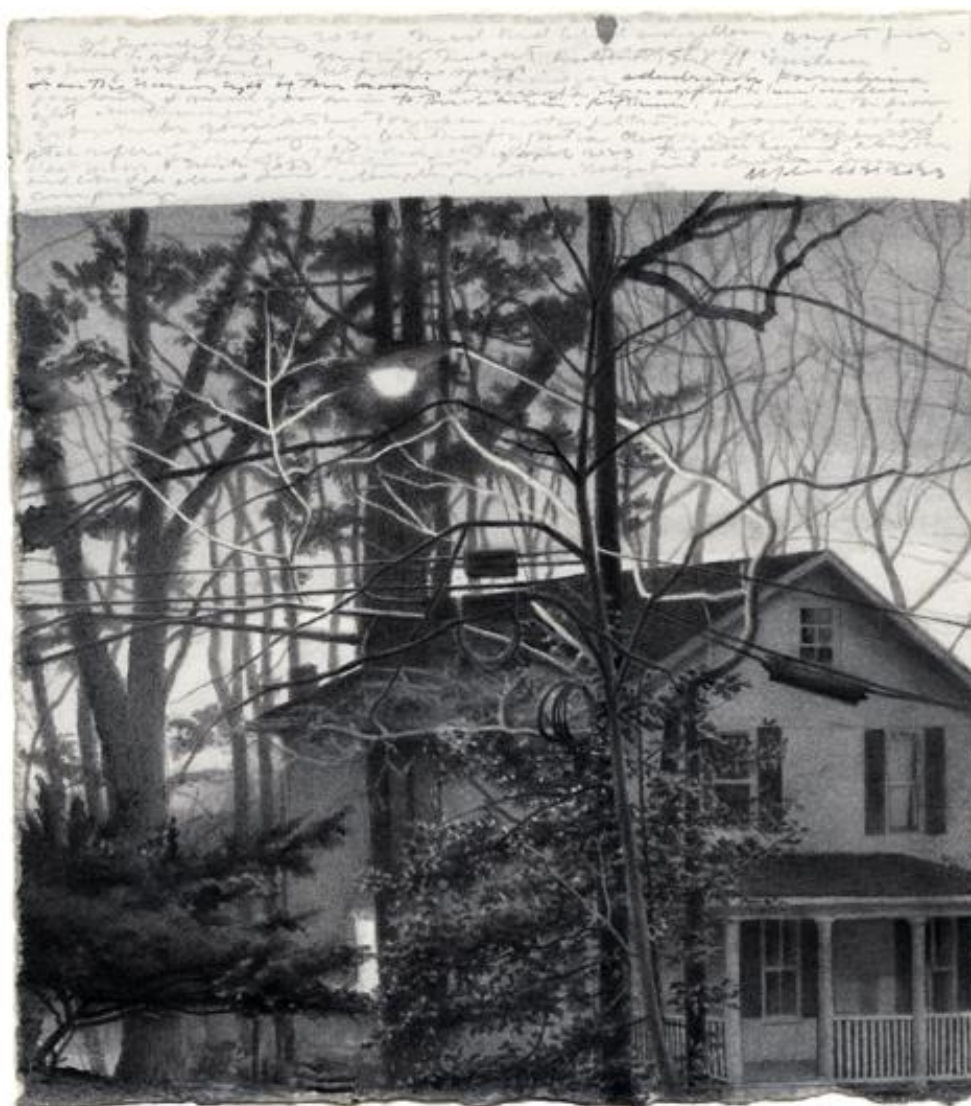
22. *Still Life with Fall Leaves*, 2020-2023  
watercolor, graphite, and acrylic on Fabriano paper  
sheet: 4 1/4 x 4 1/2", frame: 11 7/8 x 11 7/8"



23. *Study for Home 1*, 2013-2014  
watercolor and graphite on Fabriano paper  
sheet: 5 1/4 x 12 1/4", frame: 11 7/8 x 18 7/8"



24. *Twilight with Clock*, 2023-2024  
watercolor, acrylic and graphite on Fabriano paper  
sheet: 6 ¼ x 5 5/8", frame: 13 7/8 x 12 7/8"



25. *Twilight with Streetlight II*, 2021-2023  
 watercolor, acrylic, pen and ink, and graphite on Fabriano paper  
 sheet: 7 1/8 x 6 1/4", frame: 7 1/8 x 6 1/4"



## 12 Journals



pgs. 12-13

see 9 – Kitchen I



pgs. 64-65

see 25 – Twilight with Streetlight II

Book 150: Early Winter 2018 / Early Spring 2019

Thursday 27 December 2018 to Saturday 30 March 2019

watercolor, graphite, pen and ink on Arches paper in linen bound volume, 96 pages

page size: 4 x 6 1/4", open book: 4 3/8 x 12 1/2"





pgs. 10-11

see 17 – Self-Portrait with First Light



pgs. 46-47

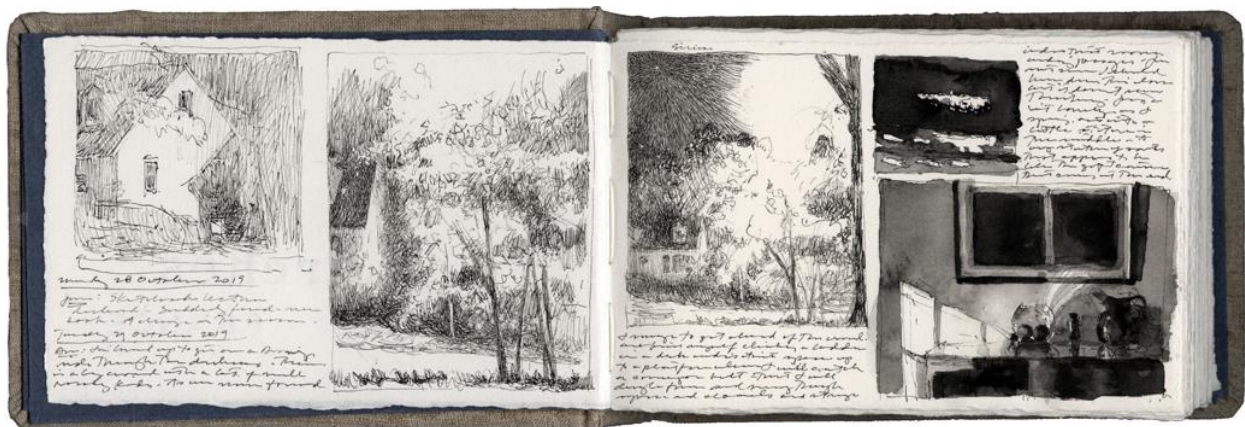
see 9 – Kitchen I

Book 151: Spring / Early Summer 2019

Sunday 31 March 2019 to Friday 19 July 2019

watercolor, graphite, pen and ink on Arches paper in linen bound volume, 96 pages

page size: 4 x 6 1/4", open book: 4 3/8 x 12 1/2"



pgs. 2-3

see 1 – Astronomical Chart with Sunlight



pgs. 62-63

see 20 – Self-Portrait with Saturn

Book 153: Fall 2019 / Winter 2020

Monday 28 October 2019 to Saturday 23 February 2019

watercolor, graphite, pen and ink on Arches paper in linen bound volume, 96 pages

page size: 4 x 6 1/4", open book: 4 3/8 x 12 1/2"





pgs. 50-51 see 5 – Doorway II



Pgs. 52-53 see 13 – Reflection with Gibbous Moon



Pgs. 78-79 see 15 – Reflection with Streetlight and Leaves see 6 – Doorway and Drawings II

Book 154: Late Winter / Late Spring 2020

Monday 24 February 2020 to Saturday 20 June 2020

watercolor, graphite, pen and ink on Arches paper in linen bound volume, 96 pages

page size: 4 x 6 1/4", open book: 4 3/8 x 12 1/2"



pgs. 2-3

see 9 – Kitchen: Study in Black



pgs. 50-51

see 22 – Still-Life with Fall Leaves



pgs. 70-71

see – 25 Twilight with Streetlight II

Book 156: Late Summer / Fall 2020

Thursday 27 August 2020 to Monday 23 November 2020

watercolor, graphite, pen and ink on Arches paper in linen bound volume, 96 pages

page size: 4 x 6 1/4", open book: 4 3/8 x 12 1/2"





pgs. 20-21

see 19 – Self-Portrait with Night Sky



pgs. 30-31

see 25 – Twilight with Streetlight II

see 17 – Self-Portrait with First Light

Book 157: Late Fall 2020 / Winter 2021

Tuesday 24 November 2020 to Thursday 25 February 2021

watercolor, graphite, pen and ink on Arches paper in linen bound volume, 96 pages

page size: 4 x 6 1/4", open book: 4 3/8 x 12 1/2"



pgs. 38-39

see 19 – Self-Portrait with Night Sky



pgs. 40-41 see 14 – Self-Portrait with Night Sky

Book 159: Late Spring 2020 / Summer 2021

Tuesday 15 May 2021 to Thursday 24 August 2021

watercolor, graphite, pen and ink, and acrylic on Arches paper in linen bound volume, 96 pages

page size: 4 x 6 1/4", open book: 4 3/8 x 12 1/2"





pgs. 60-61 see 14 – Long Twilight



pgs. 70-71 see 19 – Self-Portrait with Night Sky

Book 160: Late Summer / Fall 2021

Wednesday 25 August 2021 to Monday 29 November 2021

watercolor, graphite, pen and ink, and acrylic on Arches paper in linen bound volume, 96 pages

page size: 4 x 6 1/4", open book: 4 3/8 x 12 1/2"



pgs. 2-3

see 14 – Long Twilight



pgs. 44-45 see 19 – Self-Portrait with Night Sky

see 25 – Twilight with Streetlight II

Book 161: Late Fall 2021 / Early Spring 2022

Tuesday 30 November 2021 to Thursday 31 March 2022

watercolor, graphite, pen and ink, and acrylic on Arches paper in linen bound volume, 96 pages

page size: 4 x 6 1/4", open book: 4 3/8 x 12 1/2"





pgs. 34-35

see 24 – Twilight with Clock



pgs. 28-29

see 24 – Twilight with Clock



pg. 66- 67

see – 25 Twilight with Streetlight II

Book 165: Late Spring / Summer 2023

Friday 12 May 2023 to Sunday 17 September 2023

watercolor, graphite, pen and ink, and acrylic on Arches paper in linen bound volume, 96 pages

page size: 4 x 6 ¼", open book: 4 3/8 x 12 1/2"





pgs. 82-83

see 24 – Twilight with Clock

see 25 – Twilight with Streetlight II



pgs. 88-89

see 2 – Dark Observatory I

Book 166: Late Summer / Winter 2024

Monday 18 September 2023 to Sunday 14 January 2024

watercolor, graphite, pen and ink, and acrylic on Arches paper in linen bound volume, 96 pages

page size: 4 x 6 1/4", open book: 4 3/8 x 12 1/2"



pgs. 22-23

see 4 – Dark Observatory III



pgs. 26-27

see 3 – Dark Observatory II

see 25 – Twilight with Clock



pgs. 94-95

see 3 – Dark Observatory II

Book 167: Late Winter 2024

Monday 15 January 2024 – 7 July 2024

watercolor, graphite, pen and ink, and acrylic on Arches paper in linen bound volume, 96 pages

page size: 4 x 6 1/4", open book: 4 3/8 x 12 1/2"